

# Climate Risk Adaptation

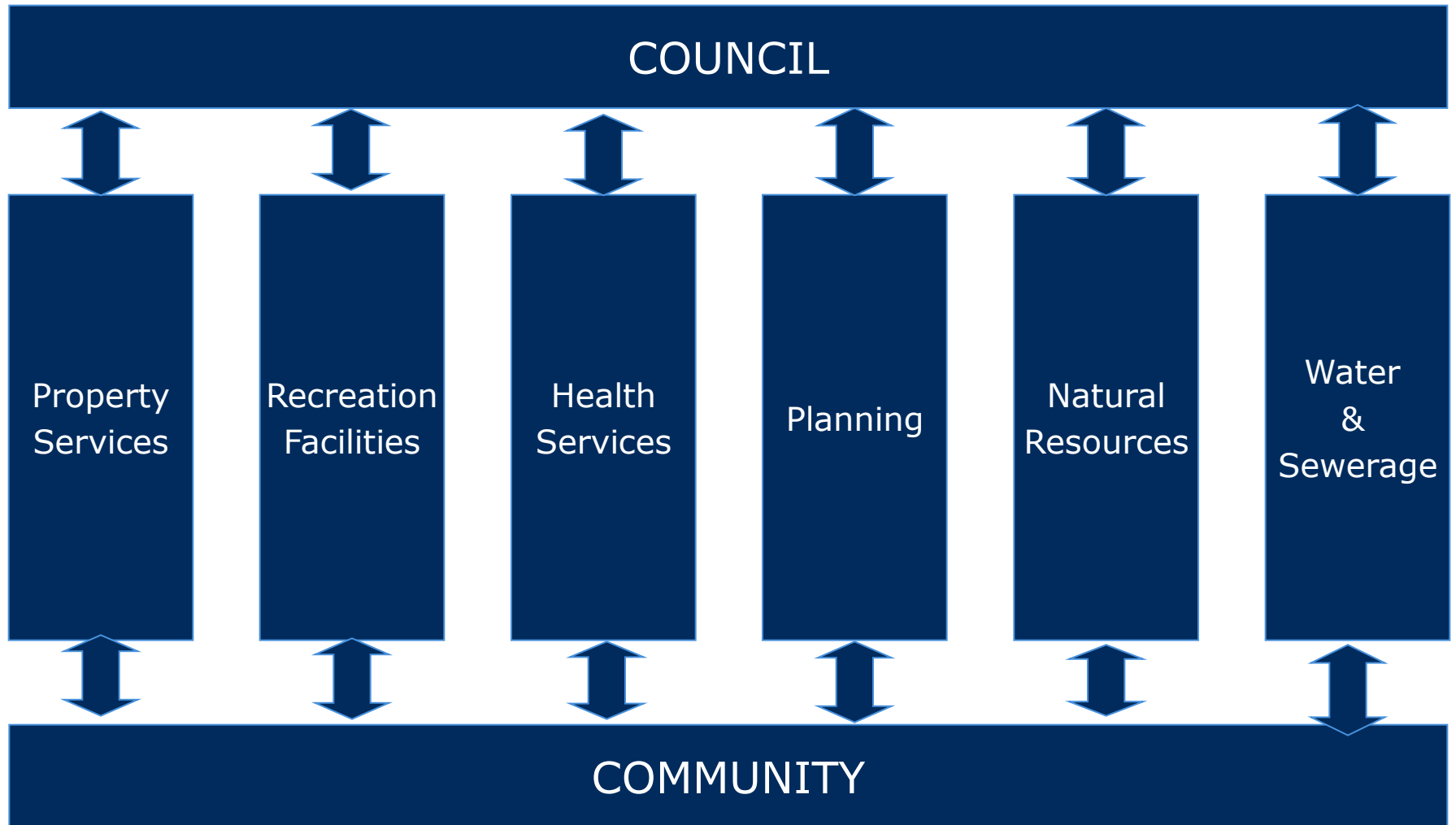


SA's Sector Wide Strategy

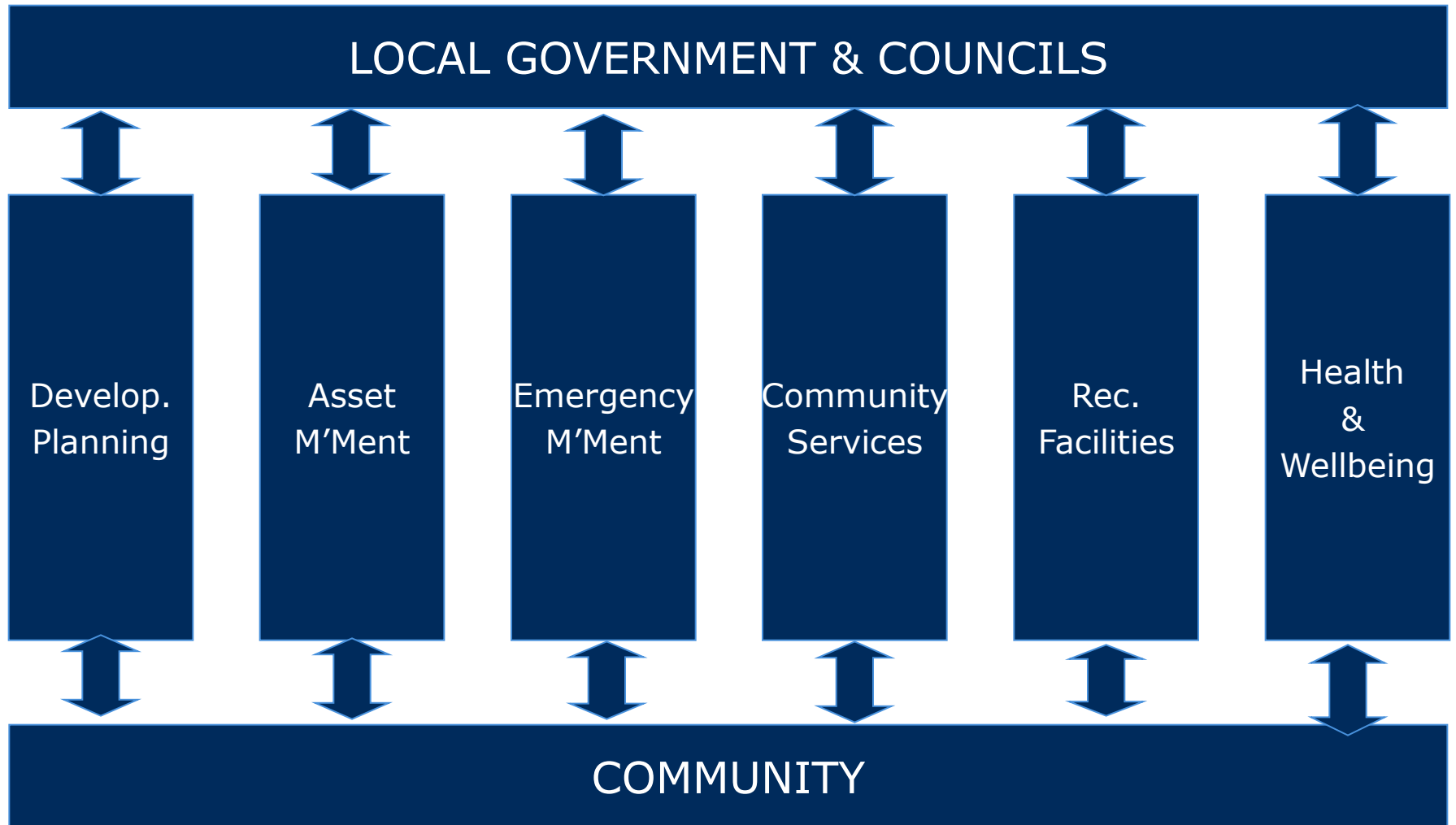
# The world can not insure itself out of climate change

**Lloyds of London – Sept 2008**

# Strategic Risk Approach







LOCAL GOVERNMENT & COUNCILS

Prosperity & Sustainability

Develop.  
Planning

Asset  
M'Ment

Emergency  
M'Ment

Community  
Services

Rec.  
Facilities

Health  
&  
Wellbeing

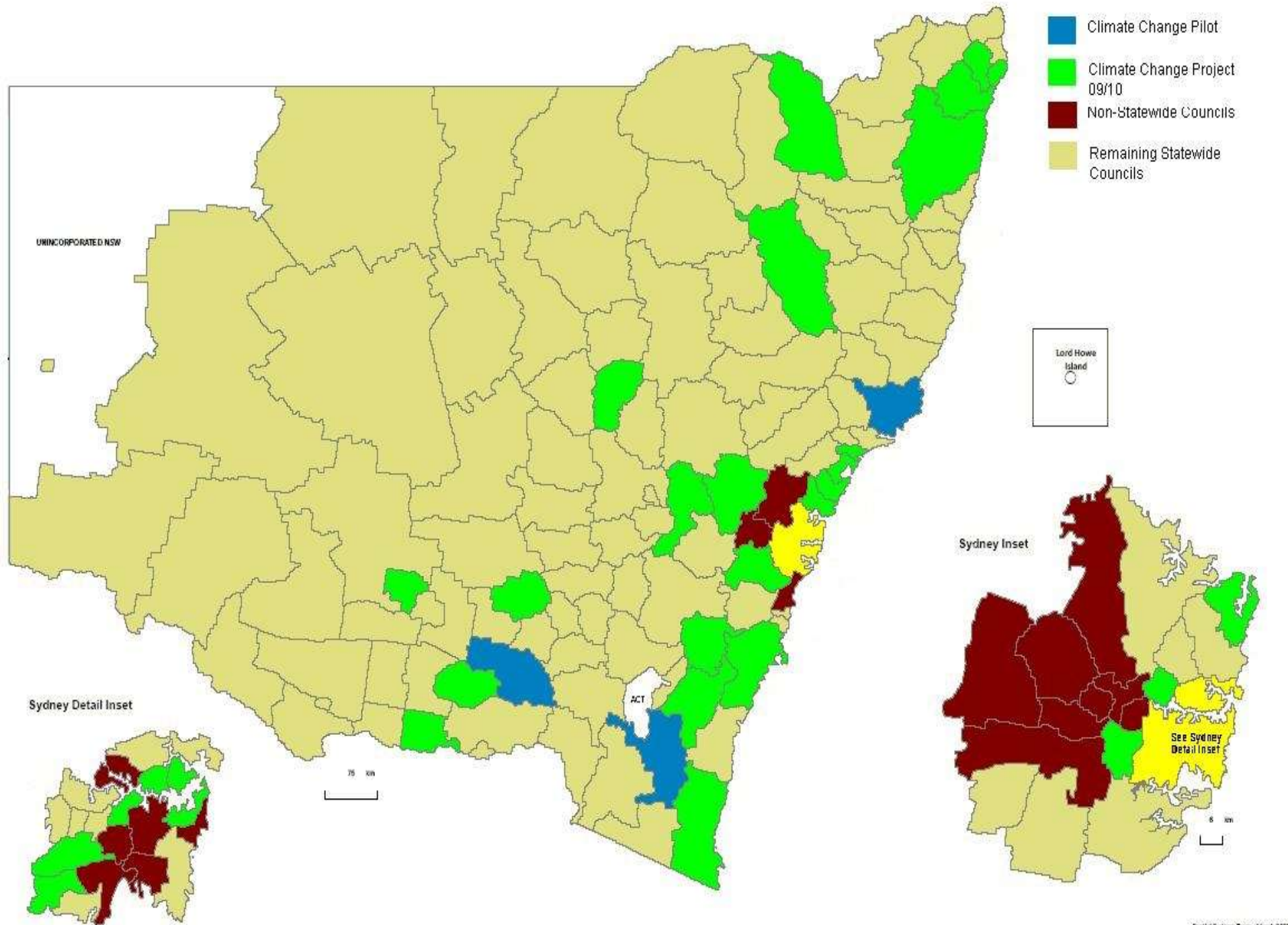
COMMUNITY



# Climate Risk Adaptation



NSW Outcomes



# Adaptation Plan with Strategic Plan References

RISK ID	RISK DESCRIPTION	RISK RATING	CURRENT CONTROLS	FUTURE ADAPTATION PLAN	URBAN AND RURAL STRATEGIES
HDCN5	<ul style="list-style-type: none"> <li>Increase in number of hot days above 35 degrees will increase the level of evaporation to the waterways which has potential to reduce water availability to the community</li> </ul>	High	<ul style="list-style-type: none"> <li>Incorporated within Councils Integrated Water Cycle Management Plan (IWCMP)</li> </ul>	<ul style="list-style-type: none"> <li>Review of IWCMP.</li> <li>Council is in the process of developing a Climate Change and Water Security Plan.</li> </ul>	
HDDN4	<ul style="list-style-type: none"> <li>Increased number of hot days above 35 degrees may cause changes to the ecosystems resulting in the threat to or loss of plant and animal species within the natural environment</li> </ul>	High	<ul style="list-style-type: none"> <li>Existing policy and legislation includes recovery plans for threatened species.</li> </ul>	<ul style="list-style-type: none"> <li>Development of a Biodiversity Management Plan.</li> <li>Inclusion of environmentally sensitive areas in LEP.</li> </ul>	U6.5, R6.1
HDDN5	<ul style="list-style-type: none"> <li>Increased average temperature may cause changes in the environment biodiversity resulting in the threat to or loss of plant and animal species within the natural environment</li> </ul>	High	<ul style="list-style-type: none"> <li>Existing policy and legislation includes recovery plans for threatened species.</li> </ul>	<ul style="list-style-type: none"> <li>Development of a Biodiversity Management Plan.</li> <li>Inclusion of environmentally sensitive areas in LEP.</li> </ul>	U6.5, R6.1
HDDN7	<ul style="list-style-type: none"> <li>Increased average temperature could reduce the level of water availability and water quality resulting in the adverse impacts on the aquatic ecosystems</li> </ul>	High	<ul style="list-style-type: none"> <li>Release of environmental flows included in the IWCMP.</li> </ul>	<ul style="list-style-type: none"> <li>Review of IWCMP.</li> <li>Council is in the process of developing a Climate Change and Water Security Plan.</li> </ul>	R6.4
HDEN3	<ul style="list-style-type: none"> <li>Councils capacity to fund the required works and the development of identified strategies in managing community expectations associated with Natural Resources Management as a consequence of the impacts of the increased number of hot days above 35 degrees. The diverting of existing funds may also impact on the ability to maintain current service levels.</li> </ul>	High	<ul style="list-style-type: none"> <li>Budget requirements assessed through Management Plan process.</li> </ul>		

# Risk Assessment all Impact Analysis

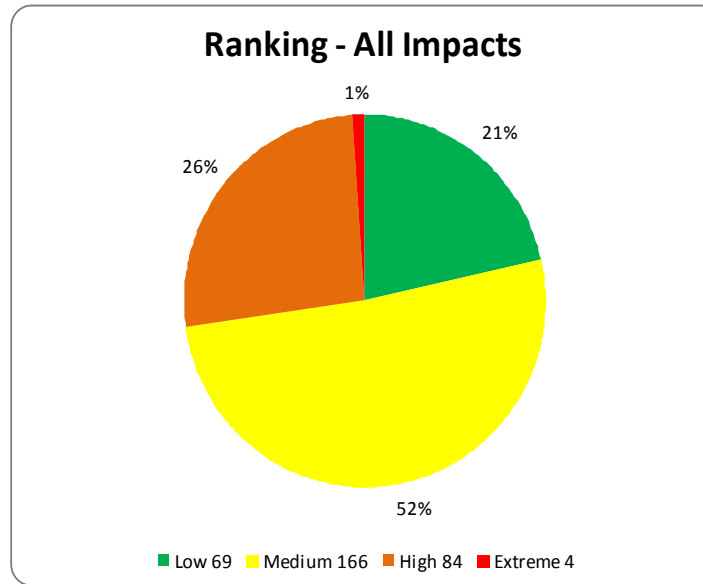
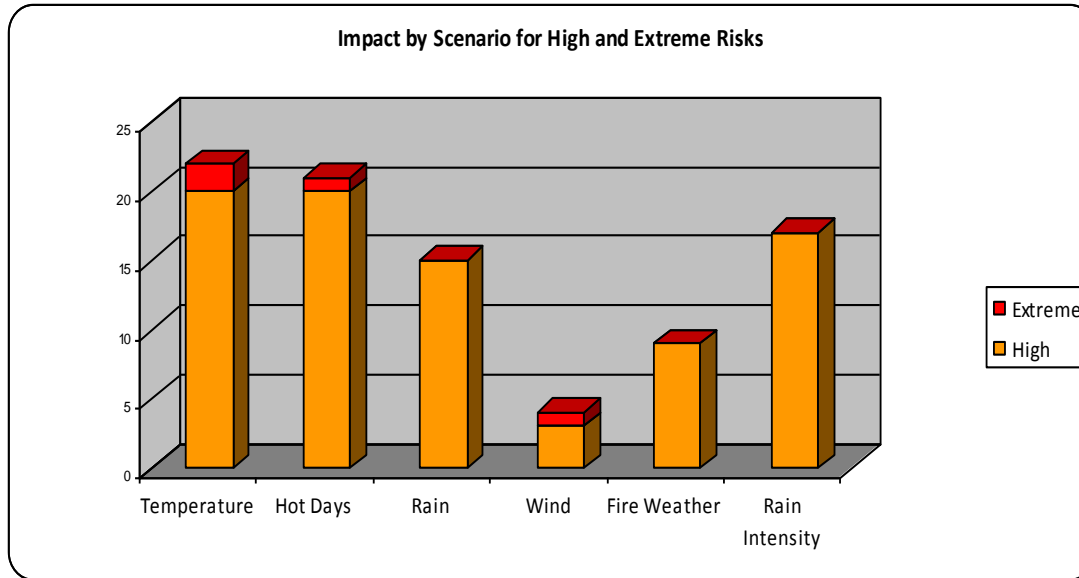


Table 1 - Impact Rankings by Scenario							Ranking all Impacts	
	Temperature	Hot Days	Rain	Wind	Fire Weather	Rain Intensity		
Low	25	27	9	3	2	3	Low	69
Medium	33	39	21	11	32	30	Medium	166
High	20	20	15	3	9	17	High	84
Extreme	2	1	0	1	0	0	Extreme	4
<b>Total</b>	<b>80</b>	<b>87</b>	<b>45</b>	<b>18</b>	<b>43</b>	<b>50</b>	<b>Total</b>	<b>323</b>

# High and Extreme Impact Analysis



<b>Impact Rankings by Scenario High and Extreme Risks</b>							
	Temperature	Hot Days	Rain	Wind	Fire Weather	Rain Intensity	Total
High	20	20	15	3	9	17	84
Extreme	2	1	0	1	0	0	4
Total	22	21	15	4	9	17	88
Percentage	25%	24%	17%	5%	10%	19%	100%

- Asset Management Planning (data, conditions, lifespan)
- Tree Management Strategies (risk management, species mix)
- Funding/budgets – grants, environmental levies
- Meeting community expectations
- Monitor and adapt to legislative standards (BCA minimum standards, defaulting to legalisation planning standards)
- Review & enhance Maintenance Programs

## Local Government



Unified  
&  
Equal  
Partner



Funding  
Programs  
&  
Research  
Grants



Negotiate  
Legislative  
Changes



Negotiate  
Services  
With  
State  
Gov't



Regional  
Structures  
(Tourism)  
Employment)



Insurance  
Scheme's  
(Local  
&  
Global)