

# Surf Coast Shire Community Engagement Framework

**MAV 'Community Planning Unlimited'**

Supported by  
the Victorian  
Government



# Surf Coast Shire – Community Engagement Framework

- **Background**

Your Visions (2003)

- **Where are we now?**

SCS Community Engagement Framework

- **How will it happen?**

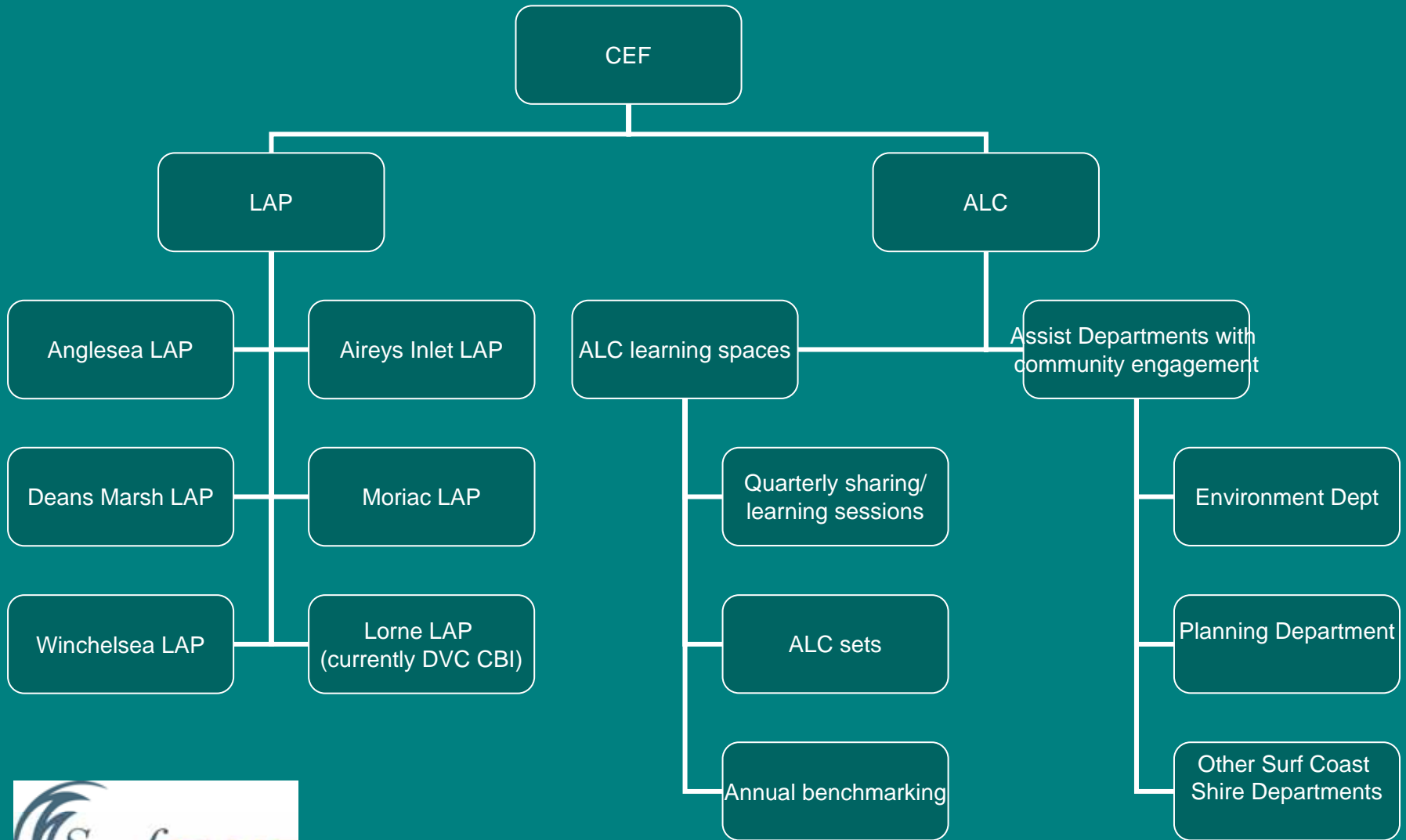
Community Engagement Framework

Local Area Planning

Action Learning Cycles



# Surf Coast Shire - Community Engagement Framework



# Surf Coast Shire – Community Engagement Framework

## Local Area Plans (LAP) will

be developed by the local community

- To identify issues of major concern to their community (local areas),
- To prioritise issues according to need, urgency and accessibility of resources
- To identify where and how communities seek support



## Each LAP Group will

- Develop a communication strategy
- Ensure that decision-making processes are clear and widely understood
- Develop Local Action Plans, to take responsibility for achieving their Plan



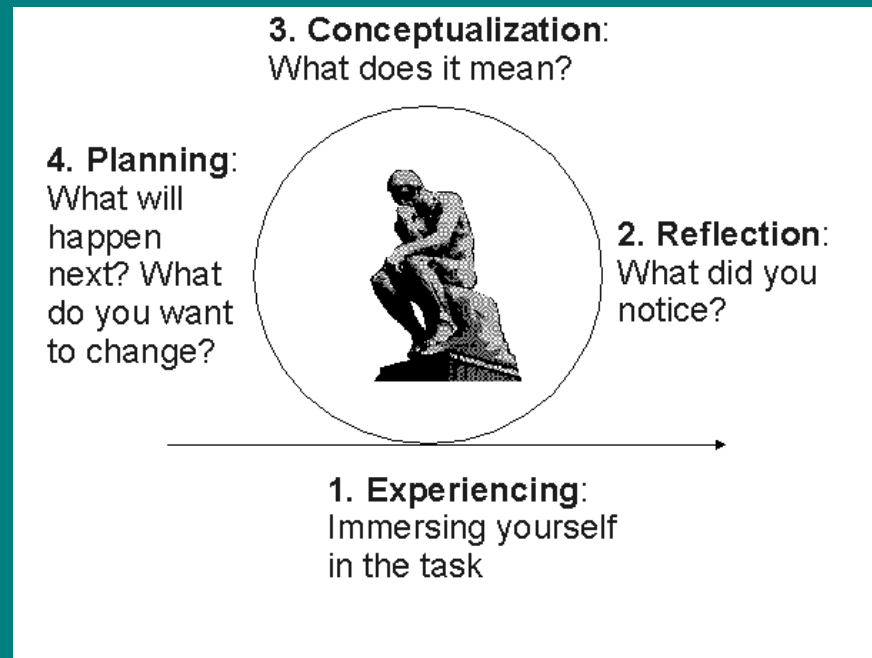
# Surf Coast Shire – Action Learning Cycle

## •What is the Action Learning Cycle?

For more information on the Action Learning Cycle refer to either David Kolb or Peter Honey and Alan Mumford

(<http://faculty.css.edu/dswenson/web/PAGEMILL/Kolb.htm>).

1. Doing
2. Reflection
3. Interpretation
4. Planning



# Surf Coast Shire - Action Learning Cycle

- How will the Action Learning Cycle be implemented?
  - Quarterly sessions
  - External facilitators
  - Surf Coast Shire examples
- What will the use of an Action Learning Cycle achieve?



# Surf Coast Shire – Organisational Support

- Working group
  - Mayor
  - Councillor
  - CEO
  - All Directors
  - 3 external members (2 DVC, 1 EPA)
  
- ABEF



# Surf Coast Shire - Action Learning Cycle

## Examples of involvement with Departments

**Planning Unit** - Café conversations with the Mayor to discuss the Torquay/Jan Juc Structure Plan

**Environment Unit** — Speak Out

**Infrastructure** - Special Rates and Charges – Roads and Drainage Scheme

**Children's Services** — Speak Out

**Aged Care** — Speak Out

**Leisure & Community Services** — Speak Out

