



Gender & Disaster Pod

An initiative of WHGNE, WHIN & MUDRI

MAV PVAW Network Meeting

‘A disaster by any other name ...’

Dr Debra Parkinson & Steve O’Malley, AFSM

Virtual: June 17, 2020

The GAD Pod acknowledges the Traditional Owners of the lands from which we meet.



Gender & Disaster Pod

An initiative of WHGNE, WHIN & MUDRI

[HOME](#)

[ABOUT](#) ▾

[INFO HUB](#) ▾

[THEMES](#) ▾

[NEWS](#)

[CONTACT](#)

[TRAINING HUB](#) ▾



EXIT SITE



RESEARCH & RESOURCES



CONFERENCES



G&D ROADMAPS



NATIONAL GEM GUIDELINES



EDUCATION & TRAINING



Gender & Disaster Pod

An initiative of WHGNE, WHIN & MUDRI

What's a disaster?

A serious disruption of the functioning of a community or a society at any scale due to hazardous events interacting with conditions of exposure, vulnerability and capacity, leading to one or more of the following: human, material, economic and environmental losses and impacts.

The effect of the disaster can be immediate and localized, but is often widespread and could last for a long period of time.

The effect may test or exceed the capacity of a community or society to cope using its own resources, and therefore may require assistance from external sources, which could include neighbouring jurisdictions, or those at the national or international levels.
(UNDRR)



Is a pandemic a disaster? Some opinions:

"The COVID-19 pandemic satisfies all the criteria for a disaster according to various glossaries and the classics in the sociology of disaster. However, I wonder if a stronger word such as ... CATASTROPHE... should be used given the likely or possible massive economic impact." Ben Wisner

"A disaster of global proportions. Some may argue otherwise but the multiple effects of loss of life, economic and social disruption, and infrastructure challenge would make a strong case for calling a pandemic a disaster. At minimum a pandemic such as the current coronavirus is a public health disaster." H. Aloysius Marchand

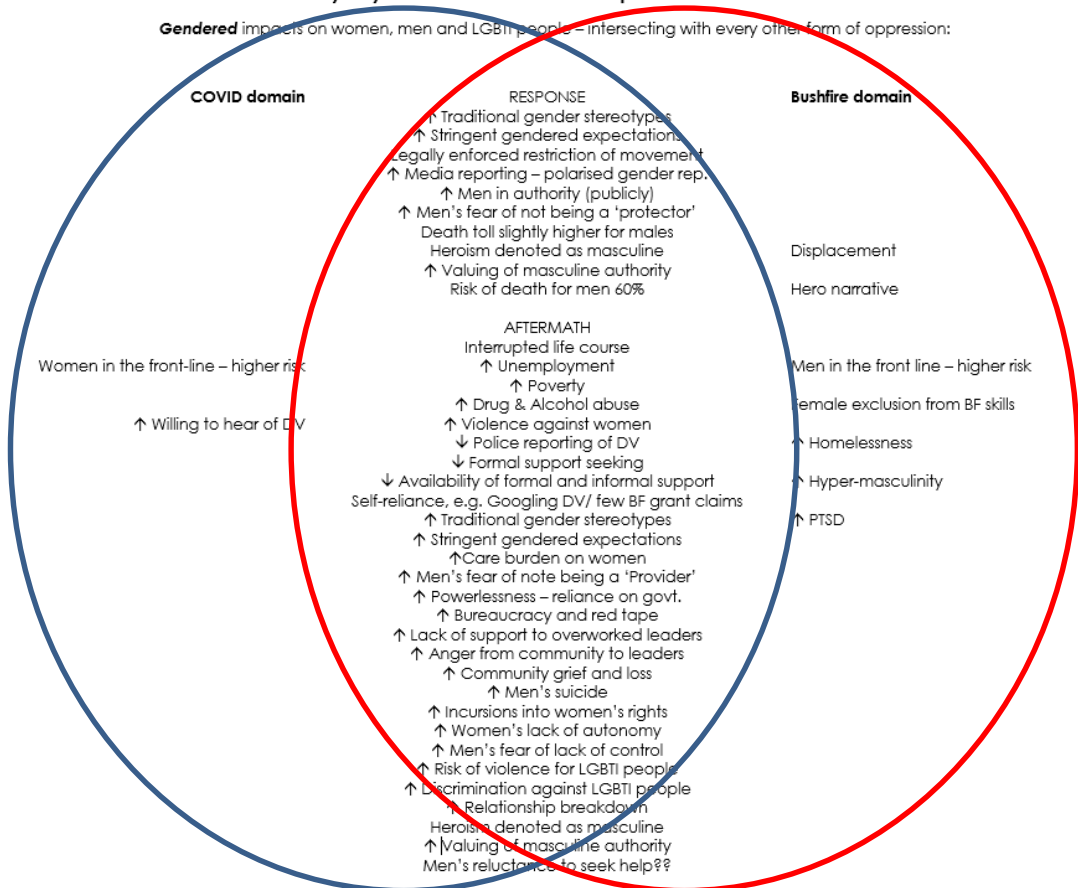
"COVID (bio-hazard) causes 'worldwide struggle': we are going through a 'mega-disaster' ... Indeed, we are in enormous crisis, we can't even run to help each other." Prof. Nilgun Okay

"The Sendai framework talks about biological hazards, and these can include human, animal and plant diseases and pests. I would classify COVID-19 and similar contagious and transmissible diseases as biological hazards. And I would certainly say the COVID-19 pandemic is a disaster, starting with a disease and magnified by human movement, action (or lack of) by governments, health status and nutrition of different populations, and access to health care, both basic and crisis care." Mary Picard

"No-one says 'natural' disaster any more. There is widespread agreement that all disasters are human caused at one level or another. The pandemic certainly fits in." Dr. Susanna M. Hoffman

A disaster by any other name Catastrophic bushfires and COVID-19

Gendered impacts on women, men and LGBTI people – intersecting with every other form of oppression:





Bushfires

Tens of thousands flee in mass bushfire evacuation - as it happened

Updated 7 Jan 2020

This blog is now closed. Our coverage will resume tomorrow morning
● Latest news: NSW fires live, Victoria bushfires updates and two dead in South Australia

**Calla Wahlquist and Helen Davidson
and Luke Henriques-Gomes**

Fri 3 Jan 2020 20.36 AEDT



3,861

3 Jan
2020

Scott Morrison has defended his leadership in the bushfire crisis

3 Jan
2020

NSW likely to lose more homes tomorrow: RFS

3 Jan
2020

Woman who refused to shake Scott Morrison's hand says he 'wasn't here



▲ Immense scale of Victorian bushfires revealed with thermal camera - video

3 Jan
2020

Summary: Pleas to evacuate remain ahead of horror bushfire conditions

- 
- 18+ million hectares burnt (England = 13 million)
 - 2,700 firefighters (<https://edition.cnn.com/2019/12/10/australia/sydney-smoke-bush-fires>)
 - 34 people killed
 - 1.25 billion animals killed and species threatened
 - 3500+ homes destroyed across 3 states (5900 buildings)
 - 6,000 Displaced (estimated)
 - 61,000 registered by Red Cross (Twitter)
 - 110 relief centres – Vic, NSW, SA
 - Thousands of fires were burning December-January
 - Toxic smoke pollution Sydney to Melbourne
 - Canberra and Melb –worst air quality index in the world
 - shorturl.at/jnGU2 and shorturl.at/im678
 - 21% Australian forests burnt

Thick plumes of smoke rise from bushfires at the coast of East Gippsland, Victoria, Australia January 4, 2020 in this aerial picture taken from AMSA Challenger jet. Photo by Australian Maritime Safety Authority/Handout via REUTERS



News and media releases

Events

Newsletters

Media contact: Dan Wheelahan
Mobile: 0488 766 010
media@science.org.au

Statement regarding Australian bushfires

January 10, 2020

The Australian Academy of Science acknowledges the devastating impact the Australian bushfires are having—and will continue to have—on people, our environment and our economy.

The scale of these bushfires is unprecedented anywhere in the world.

The Academy extends its support and sympathy to all those who have lost loved ones and whose lives are directly and indirectly impacted. We thank the many volunteers, individuals, leaders and foreign nations for their efforts and contributions.

As an independent and authoritative scientific adviser to the



Academy President Professor John Shine



Federal Government acknowledges lengthy application process for bushfire assistance

The Federal Government concedes it's taking too long to get loans and grants into the bank balances of the victims of summer's devastating and deadly bushfires.

Rectangular Snip



Charities put on notice amid claims they are stockpiling bushfire donations

More NSW ministers come out swinging against major charities, claiming the Red Cross, St Vincent de Paul and the Salvation Army are too slow at passing on money to people in fire-ravaged areas.



Farmers grateful for \$75k bushfire grant, but worried it's not enough

Already on the back foot from the ongoing drought, bushfire-affected farmers are worried the \$75,000 bushfire grant will not be enough to keep going.

Andrew Constance slams Red Cross, Salvation Army and St Vincent De Paul for bushfire relief delays

By Paige Cockburn and Kevin Nguyen

Posted 22 Jan 2020, updated 23 Jan 2020



POLICE & COURTS

Homicide probe after woman's body found in East Gippsland

A 64-year-old man has been charged with murdering a woman in East Gippsland. Police believe the parties are known to each other.

[Josh Fagan](#), [Brianna Travers](#), Herald Sun

 Subscriber only | May 12, 2020 10:39pm



GAD Pod's work

DHHS
Roadmaps
2015

GAD TASKFORCE
Jan 2014-2017

NDRGS
Lessons in
Disaster
2015-2016

NEMP
GEM
Guidelines
2015-2016

'Just Ask'
Men's
Conference
Oct 2013

'Hidden
Disaster'
Conference
March 2012

RESEARCH
30 Women
47 workers
2009 - 2012

RESEARCH
32 Men
2013

*'But what about the
men?'*
\$\$\$
NDRGS
For men's research

Men's Advisory
Group

RESEARCH
Barriers to
Women in EM
DELWP
2015-2016

RESEARCH
LGBTI in EM
DPC
2016-2017

RESEARCH
Lesbian and
biwomen's
EM
2016-2017

RESEARCH
L/T disaster
resilience
NDRGS
2017-18
30 Women
26 Men

Diversity in
Disaster
Conference
NDRGS
April 2018

Published
Journal articles:

4 International
12 Australian
2 Book chapters
1 PhD thesis

Presentations:

1 Zara Oration 'T
8 OS conferences
26 conferences
15 forums
6 podcasts
2 posters



Gender & Disaster Pod

An initiative of WHGNE, WHIN & MUDRI



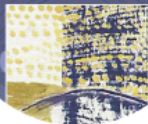
Gender & Disaster Pod

An initiative of WHGNE, WHIN & MUDRI

Lessons in Disaster



Under Pressure:
LBGTI-inclusive
emergency services



ONLINE LESSONS IN DISASTER

WHAT: This online training package contains four x 90 minute sessions on 'Lessons in Disaster'. This training combines the original 'Family Violence After Disasters' and 'Men After Disasters' in three sessions and the fourth is an adaptation of 'Under Pressure: LBGTI-Inclusive services in emergencies'.

WHY: The Online 'Lessons in Disaster' training package aims to strengthen the capacity of health, community and emergency sectors to challenge gender stereotypes and inequalities, and understand the relevance of family violence to disaster. 'Disaster' includes pandemics as well as bushfires, floods and other emergencies. As Australia grapples with COVID-19, it is more critical than ever to understand the impact of gendered expectations in disasters.

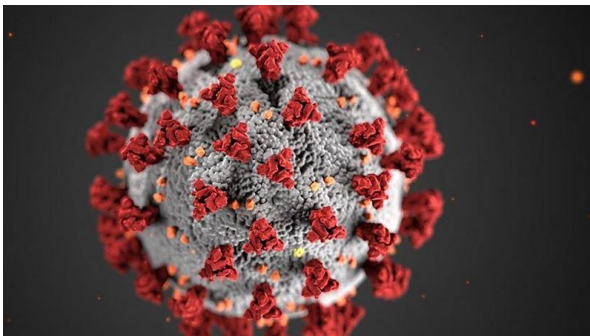
THIS ONLINE PACKAGE PROVIDES PARTICIPANTS WITH:

- Knowledge of the concept of the social construction of gender and the impact on men and women's experience of disaster
- Knowledge to identify the implicit and explicit behaviours of individuals, and the organisational practices that support rigid gender roles
- Strategies and actions to facilitate constructive responses by men in and after disaster and to ensure the safety needs of women and children are met
- Strategies to address gender inequalities
- Knowledge of how to refer appropriately when family violence is indicated



Gender & Disaster Pod

An initiative of WHGNE, WHIN & MUDRI



May 28-29
Or June 4-5

**Gender, Pandemics, Disasters:
Lessons for Primary Prevention
Practitioners**

by Respect Victoria [Following](#)

Free

[Register](#)

The training comprises of 4x 90 minutes sessions over two days:
10:30am-12pm followed by 1pm-2:30pm, Thursday 28 May - Friday 29
May.

About this Event

Respect Victoria is partnering with the [Gender and
Disaster Pod](#) to provide specialised training for
practitioners in the primary prevention of family violence
and violence against women sector.

Date And Time

Thu., 28/05/2020, 10:30 am -
Fri., 29/05/2020, 2:30 pm AEST
[Add to Calendar](#)

Location

Online Event



Gender & Disaster Pod

An initiative of WHGNE, WHIN & MUDRI

Babes in arms, sooty heroes and men in charge

Checklist

Consider the following:

- has everyone in the household and support network developed the plan together?
- have you developed a back-up plan or contingency options in case you get caught?
- have you included your out-of-town contacts?
- do you know where you will stay if you can't return home?
- have you included important phone numbers?
- have you completed your medical information list?
- have you checked your insurance cover?
- have you developed a household financial plan?
- have you completed your annual check-up?



Protect what matters most



Myth: 'Women and children first'



OMAF P. 2010. 27. 530. 5



Gender & Disaster Pod

An initiative of WHGNE, WHIN & MUDRI

<https://www.nmni.com/collections/history/1900-1923-home-rule-to-partition/titanic-and-her-sister-ships>



OVER 96 DEAD TOWNS RAZED FIRES RAGE ON

THE AGE

Published by Macmillan South 1954

Sunday, February 8, 2008

\$1.50

Our darkest day



YEA ROAD, SUNDAY, FEBRUARY 8 "The road is littered with cars, crashed and abandoned in the panic to escape. Some became tombs." Ben Doherty, PAGE 4



Gender & Disaster Pod

An initiative of WHGNE, WHIN & MUDRI

Having a gender lens in fire planning will increase community preparedness, survival and resilience

In the event of a Code Red day, where will you be? Where will your partner?^[1] Where will the kids be?

What do you plan to be doing on a Code Red day?

If you're thinking, 'I'm a man so I should stay and defend property' or 'I'm a woman, so I should leave children/others/alone':

- ◆ What do you think is **behind each of your decisions**?
- ◆ In your case as a couple, and a family, **does it make sense for you (the man) to stay and try to defend property?**
- ◆ **Does it make sense for you (the woman) to try to escape?**
- ◆ If the plan is to leave early, **what is early?**
- ◆ Will you **(the woman) be happy to drive away alone** to defend the house on a Code Red day?
- ◆ Is **trying to persuade** him to leave with you **likely** to happen?
- ◆ **What's the worst that could happen**, if you follow the plan (of him staying, her leaving)?
- ◆ Do you know that **over 40% of those who die in bushfires are female?**
- ◆ Does it still seem like the **best option?**

See Postcard

'Why gendered fire planning?'

- ◆ On Ash Wednesday in 1983, "Most people **died during late evacuations** and the majority of those were **women and children**, whereas most of the **men killed had been defending property**".^[1]
- ◆ "There is evidence of disagreements as the fire approached. In virtually all cases this was between **women who wanted to leave** and take the men with them, and **men who either wanted to stay and defend** or who felt they had to support others in that role."^[2]
- ◆ Expectations of **heroic masculinity set men up for failure**: Bushfire CRC researchers write: "Societal pressure sees **men attempt to perform protective roles** when the fire threatens that many have neither the knowledge nor ability to fulfil safely".^[3]
- ◆ "The kids where the **parents fought about leaving**, there was **trauma afterwards**."^[4]
- ◆ **Women escaped alone or with children**, often in terrifying circumstances, or had limited autonomy.^[5]
- ◆ I have first-hand knowledge that there are **women, wives**, on Black Saturday who **wanted to leave town** and their **husband said, 'No, we're staying to fight this'**. And they stayed to fight and they both died.^[6]
- ◆ "**We never had a fire plan**. You thought he'd be here. My fire plan



ANALYSIS

Black Saturday firefighters want you to listen to them, not call them 'heroes'

[The Conversation](#) / By Leanne Cutcher and Graham Dwyer

Posted 3 Jan 2020, updated 3 Jan 2020



“Firefighters don't want a roll call of heroes, but for communities to remember the lessons we have learnt from past fires and to ensure they have a bushfire plan and to heed warnings to leave ...

Firefighters don't want us to see heroes, because calling them heroes overstates their ability to control fires and downplays the long-term psychological impacts of fighting fires...”



Gender & Disaster Pod

An initiative of WHGNE, WHIN & MUDRI



Gender & Disaster Pod

An initiative of WHGNE, WHIN & MUDRI

Our findings

- All 30 women spoke of increased FV
- 17 were personally affected
- 16 afraid of partner
- 9 no violence before the fires
- 7 previously very happy

This was new research in Australia AND there was resistance to our findings from 2011 until 2016

Addressing family violence in communities recovering from emergencies

A strategy to integrate family violence services with emergency recovery

August 2016

Family Violence Framework for Emergency Management



Gender & Disaster Pod

An initiative of WHGNE, WHIN & MIRI



disaster is no excuse for family violence

You can help in just 4 steps:

1. **ASK:** Are you safe at home?
2. **NAME IT:** What you've just described to me is violence and it's a crime.
3. **RESPOND:** Give contact details of the local Domestic Violence Service, CASA and Victoria Police.
4. **FOLLOW UP:** 'Last time you spoke about your safety. I'd like to know how you are now.'

www.genderanddisaster.com.au



Gender & Disaster Pod

An initiative of WHGNE, WHIN & MUDRI

Safe Steps – 24 hour support, information or referral to safe accommodation/refuge 9322 3555 or 1800 015 188. (Toll Free for country users) www.safesteps.org.au

CASA – Centres Against Sexual Assault
1800 806 292 (all hours) www.casa.org.au

Victoria Police – 000

1800 RESPECT – Australia-wide confidential information, counselling and support service. Open 24 hours to support people impacted by sexual assault, domestic or family violence and abuse. 1800 737 732
www.1800respect.org.au/inclusive-practice/violence-in-times-of-disaster

Men's Referral Service – 1300 766 491 (Toll free). Mon-Fri: 8am – 9pm, Sat-Sun: 9am - 6pm www.ntv.org.au

(Adapted from 'Raped by a Partner')

'She dances on the wind' by Ona Henderson (03) 9712 0393



Gender & Disaster Pod

An initiative of WHGNE, WHIN & MUDRI

- UK Counting Dead Women: 16 in 3 weeks to 12/4/2020 – Average: 5 in previous ten years
- 75% in Australian Google searches for DV
- Calls to Men's Referral Service increased 94% the day Stage 3 restrictions announced
- Inconsistent stats on police reporting – DOWN in parts of UK, US, Australia
- DV support service calls slightly up, but emails exponentially up



Monash Uni research on COVID/DV

166 FV practitioners surveyed in May 2020

- 59% said frequency of VAW increased
- Half said severity increased
- 42% said new victims were coming forward
- Perpetrators are inflicting new violence and control in this pandemic


National Gender & Emergency X +
https://knowledge.aidr.org.au/resources/national-gender-and-emergency-management-guidelines/

AIDR Knowledge Hub Education for Young People

Australian Institute for Disaster Resilience
Australian Disaster Resilience Knowledge Hub

Register Log in

Collections Disasters News Glossary About Help Contact us



Gender & Disaster Pod

An initiative of WHGNE, WHIN & MUDRI

Gender and Emergency Management Guidelines

Gender issues are known to compound the damaging effects of disaster on survivors. Increasing understanding of the relationship between gender and disaster will improve the health and wellbeing of both women and men affected by disaster across Australia.

GEM Guidelines

- Full guidelines (PDF 110MB)
- GEM Guidelines checklist (PDF 299KB)
- Literature review (PDF 868KB)
- Peer evaluation report (All on Board: Evaluation Report; PDF 163MB)

The Gender and Emergency Management (GEM) Guidelines were developed collaboratively as part of

Windows taskbar: 2:02 PM 22/03/2019



Gender & Disaster Pod
An initiative of WHGNE, WHIN & MUDRI

GEM Checklist examples:

- Have you identified and engaged **domestic violence workers** in recovery efforts and committees?
- Have you **provided domestic violence training** and education to employees and volunteers?
- Have you **identified and engaged domestic violence specialists** to speak at community meetings?

- Have you included **information about domestic violence** in information about emergencies? (For example: flyers, pamphlets, advertising)
- Have you informed **evacuation centre managers of existing restraining/intervention order protocols** in evacuation centres?



- Disentangle masculinity from fire-fighting.
- Stop expecting men to protect the home and women to protect children.
- Let men be vulnerable.
- Ensure women and children's right to live free from violence is unconditional – even after disasters.







imaginarium **DISCOVERY**

- Hands on learning! Classic wooden toys, puzzles and building sets that promote learning through play.
- Apprends en t'amusant! Jouets en bois classiques, casse-tête et jeux de construction qui favorisent

imaginarium **PRETEND**

- Let's pretend! Toys that inspire imaginative play with dollhouses, play sets, dress up and accessories.
- Fais semblant! Des jouets qui développent l'imagination avec des maisons de poupées, des

imaginarium **HOME**

- Get organized! Children's furniture with storage solutions for play spaces.
- Organise-toi! Meubles pour enfants avec des solutions de rangement pour les espaces de jeux.

imaginarium **LEARN**

- Love to learn! With back-to-basics or that make learning fun for all ages.
- Aime apprendre! Avec un retour aux de nouvelles idées qui rendent l'app



WAFWA

PROMOTE - SUPPORT - NETWORK



Gender & Disaster Pod

An initiative of WHGNE, WHIN & MUDRI



Gender & Disaster Pod

An initiative of WHGNE, WHIN & MUDRI

[HOME](#)

[ABOUT](#) ▾

[INFO HUB](#) ▾

[THEMES](#) ▾

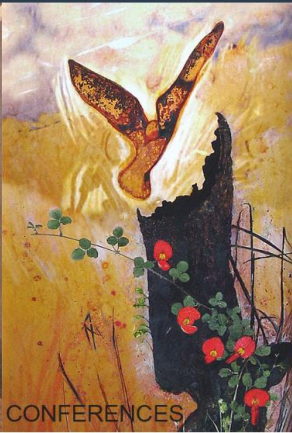
[NEWS](#)

[CONTACT](#)

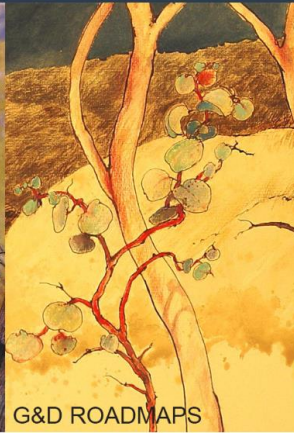
[TRAINING HUB](#) ▾



SEARCH &
RESOURCES



CONFERENCES



G&D ROADMAPS



NATIONAL GEM
GUIDELINES



EDUCATION &
TRAINING

Steve O'Malley, AFSM

MFB (GAD Pod Assoc.)

somalley@mfb.vic.gov.au

Dr Debra Parkinson

Research Fellow, Monash

University

Manager, Gender & Disaster Pod

space@netc.net.au

www.genderanddisaster.com.au