

# Gender Equity in Design

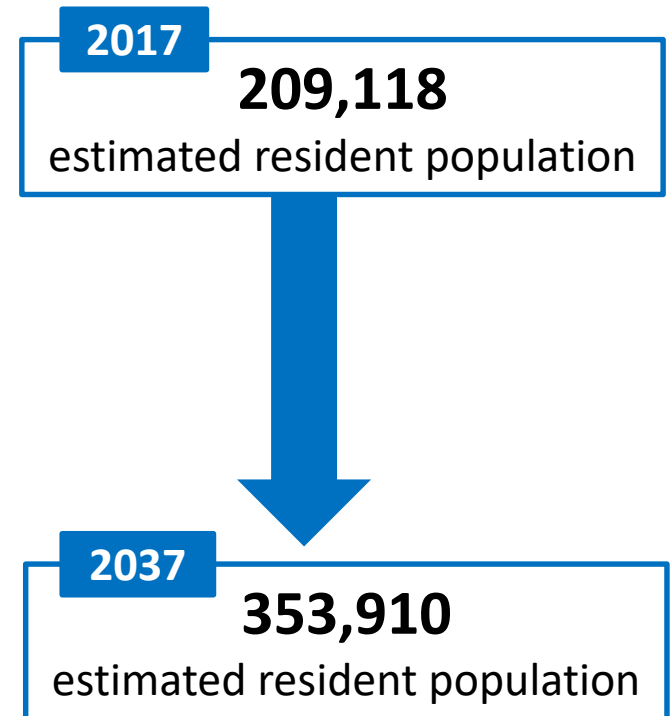
# Project purpose



# Developing the guide



**Gender Equity in Design  
Guidelines**



# What the guide looks like

## Community Pavilions

“Configuration of a social space should not emphasise the presence of an alcohol service area. Provision must be made for ways to conceal alcohol storage, such as space for fridges under benches”

## Youth Facilities

“Consider the installation of a series of single unisex toilets instead of larger male/female blocks”

## Aquatic Facilities

“Maximise the provision of stand-alone, unisex toilets and change cubicles adjacent to pool areas to increase safe access for children, regardless of their carer’s gender and to enable safe access for people of diverse genders. Provide sightlines to pool toilet entries from pool area where possible”

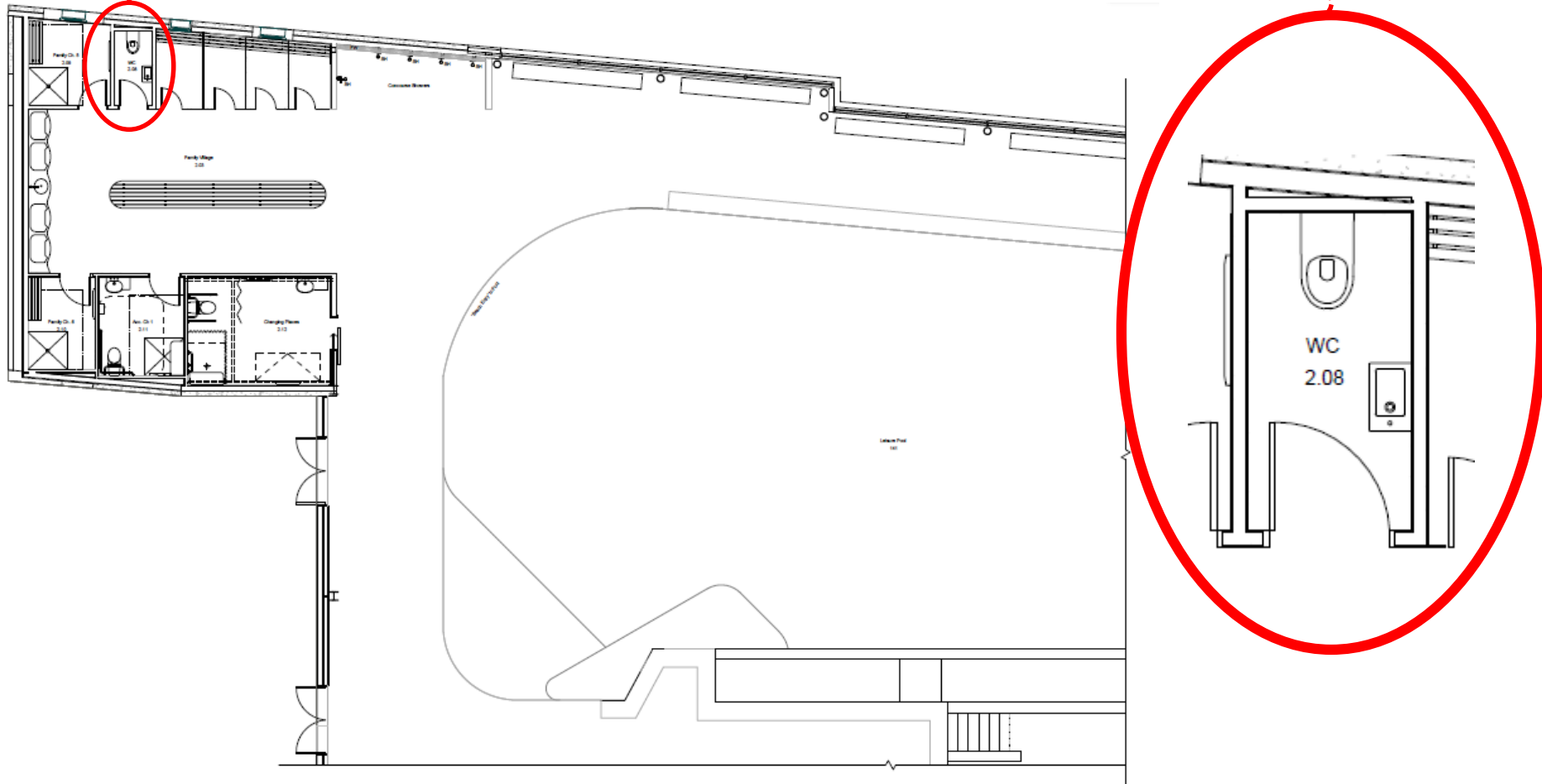
## MCH

“Baby changing facilities must be accessible by all genders”

## Community Centres

“Noise levels in open foyer areas in larger facilities should be minimised through design, i.e. in the choice of wall and floor furnishings, acoustic treatments and the shape of larger spaces. Avoid excessive use of hard reflective surfaces and finishes”

# Early successes





# Broader implications



# Any queries?

Please get in touch –

[amy.clarke@whittlesea.vic.gov.au](mailto:amy.clarke@whittlesea.vic.gov.au)