

# Maternal and Child Health Conference Family Violence



# The Government is undertaking ambitious family violence reform

227

The Royal Commission into Family Violence released its final report on 29 March 2016, making 227 recommendations. The Government has committed to implementing all of them, including six recommendations led by DET.

## The Commission recommended reforms to ensure that...

Family violence and **gender inequality** are not tolerated

**Victim survivors, including children,** are safe and supported

**Perpetrators** are held accountable

Preventing and responding to family violence is **systemic and enduring**

## The Government has responded...

*Ending Family Violence: Victoria's Plan for Change*

Rolling Action Plan 2017-2020

Free from Violence: Victoria's Prevention Strategy

Yearly reports on progress

\$2.5B

- \$572 million over two years to respond to the Royal Commission Recommendations.
- \$1.9 billion over four years to implement family violence reforms.

**Family Safety Victoria**

A new DHHS portfolio agency has been established to coordinate the Support and Safety Hubs and progress risk assessment and information sharing reforms.

# MCH services are a key platform for identifying and responding to family violence

1 in 4 families have been affected by family violence (Royal Commission into Family Violence Report, 2016)

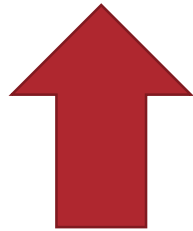


Children are present in more than 30% of family violence cases reported to police (Victoria Police, 2017)

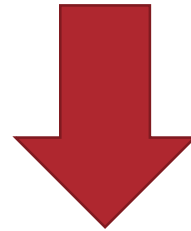


There is an increased risk of family violence after a baby is born (Royal Commission into Family Violence Report, 2016)

## Outcomes for children and young people who witness or experience violence



**Depression**  
**Anxiety**  
**Self-harm**  
**Behavioural problems**

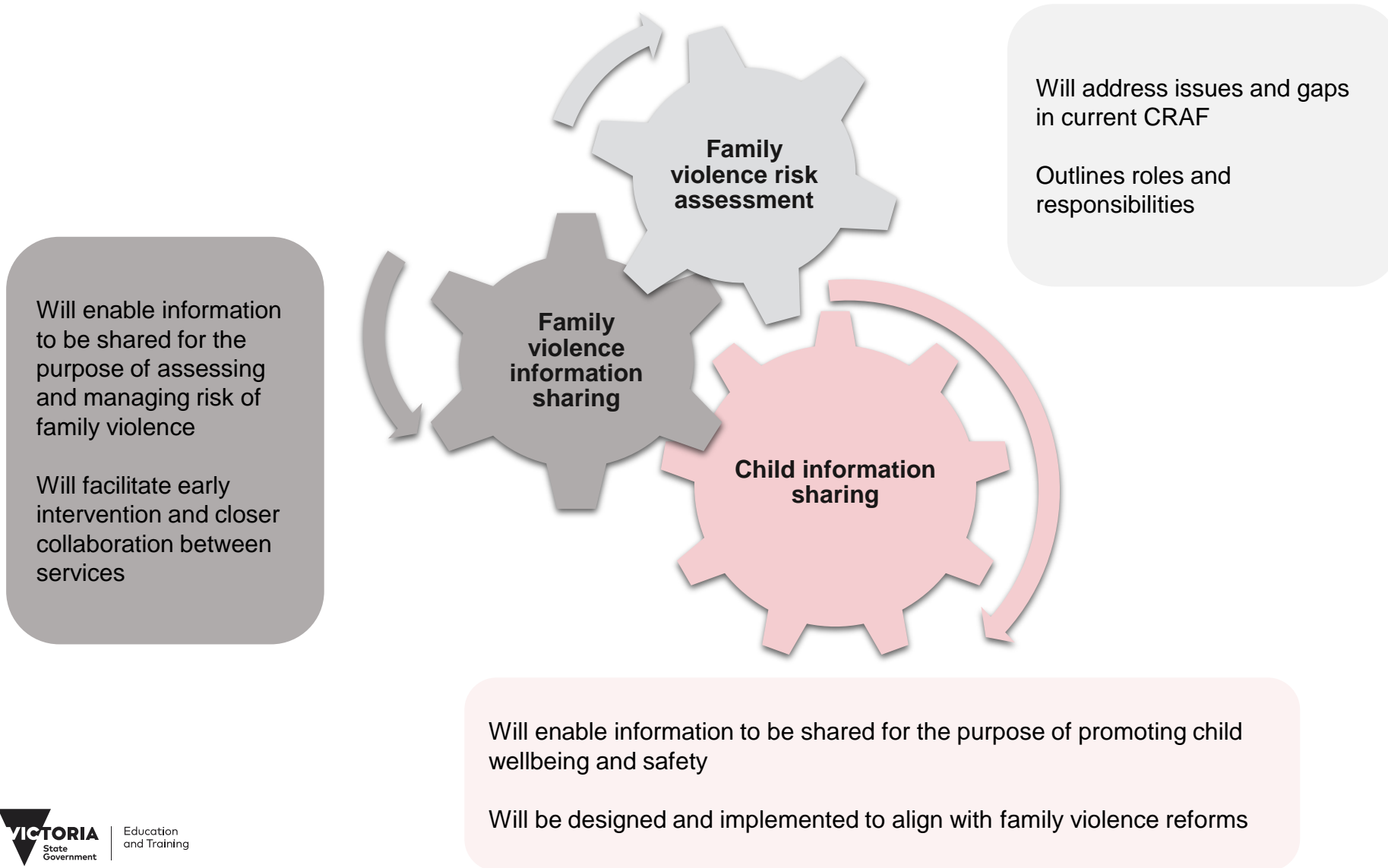


**Academic outcomes**  
**Cognitive ability**  
**Coping mechanisms and resilience**  
**Peer relationships**

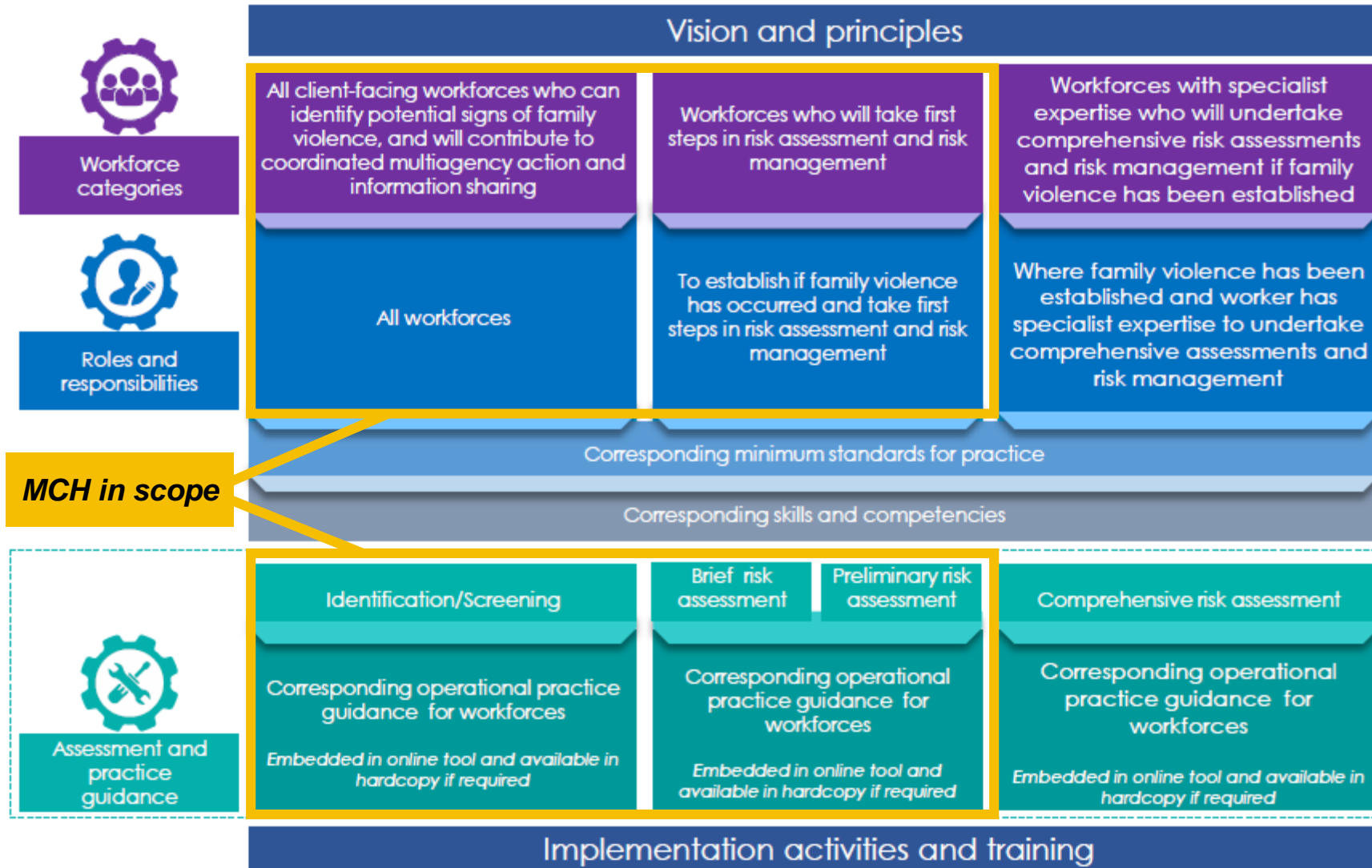
Source: Royal Commission into Family Violence Report, 2016.



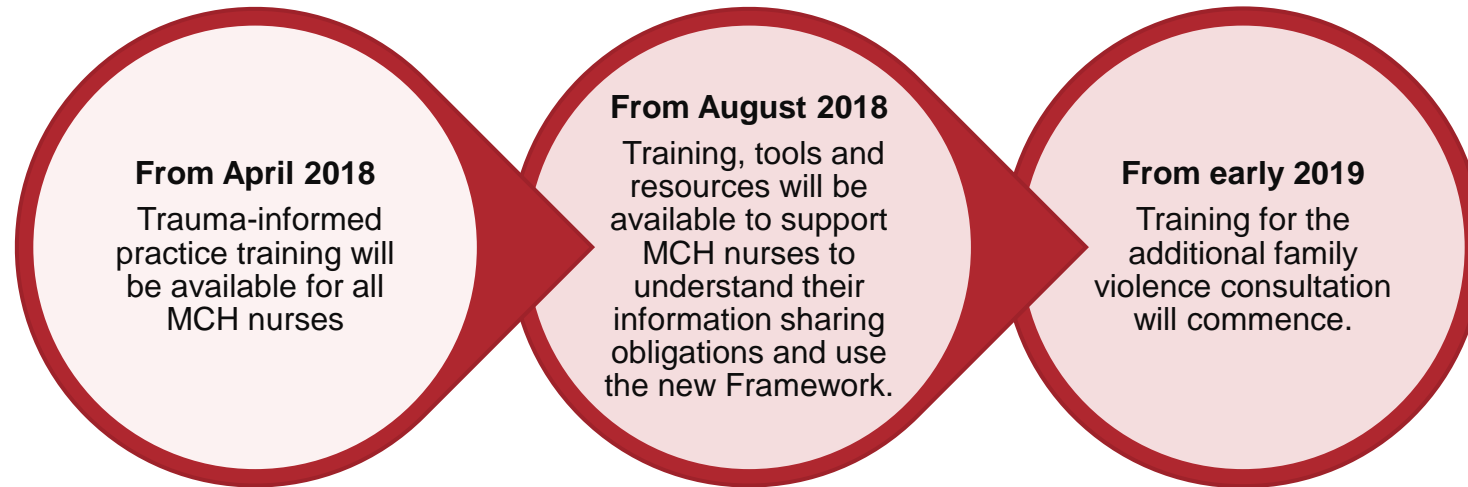
## From September 2018, there will be changes to family violence risk assessment, risk management and information sharing for MCH services



# The redevelopment of the Family Violence Risk Assessment and Risk Management Framework



## Training, tools and resources will be available to support MCH services



The Department will support MCH services to adapt their policies, practice guidance and procedures to align with the new Framework and information sharing requirements

**To contact the DET team, email:  
[family.violence.coordination@edumail.vic.gov.au](mailto:family.violence.coordination@edumail.vic.gov.au)**

Melbourne September 2017

©State of Victoria (Department of Education and Training) 2017

The copyright in this document is owned by the State of Victoria (Department of Education and Training), or in the case of some materials, by third parties (third party materials). No part may be reproduced by any process except in accordance with the provisions of the Copyright Act 1968, the National Education Access Licence for Schools (NEALS) (see below) or with permission.

An educational institution situated in Australia which is not conducted for profit, or a body responsible for administering such an institution may copy and communicate the materials, other than third party materials, for the educational purposes of the institution.

Authorised by the Department of Education and Training,

2 Treasury Place, East Melbourne, Victoria, 3002

