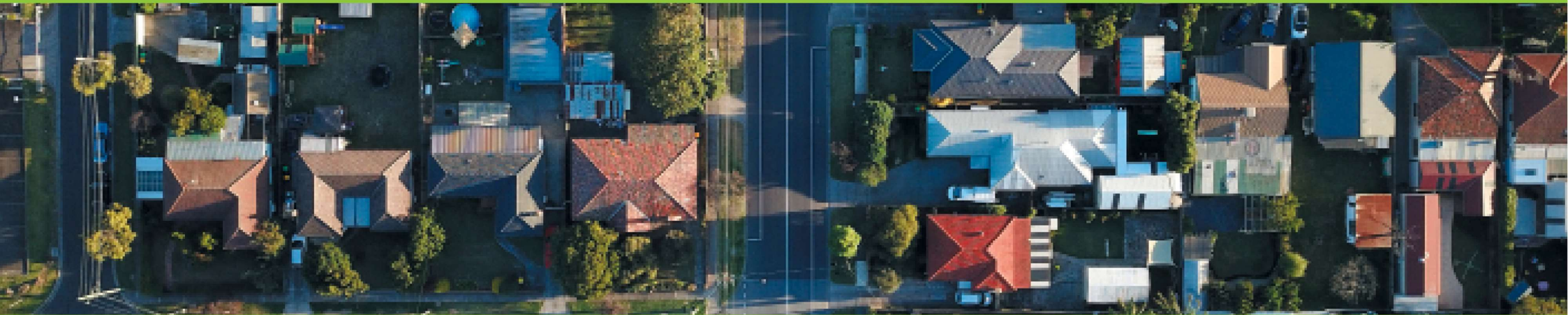


# Living Melbourne


Our metropolitan urban forest



MELBOURNE





- 
- An aerial photograph of a suburban neighborhood. The scene is dominated by lush green trees and dense foliage. In the background, several houses with red-tiled roofs are visible, nestled among the trees. In the foreground, a road winds through the area, with a white utility truck and a dark car driving. Power lines and poles are visible on the right side of the road. The overall atmosphere is peaceful and green.
- Short Background to *Living Melbourne*
  - Cross-sector consultation and collaboration during strategy development
  - Cross-sector buy-in during implementation
  - Key initiatives – completed and underway
  - Lessons learnt



# Living Melbourne

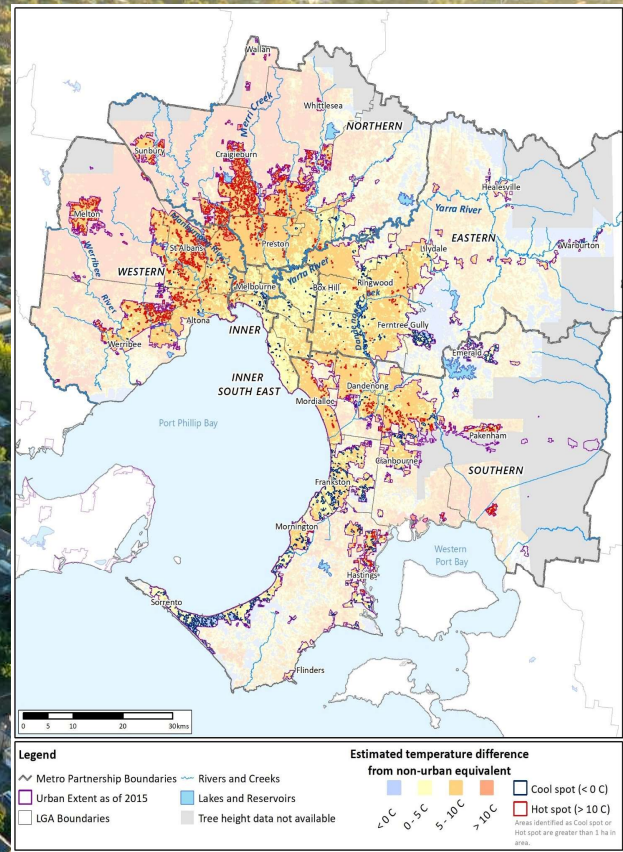
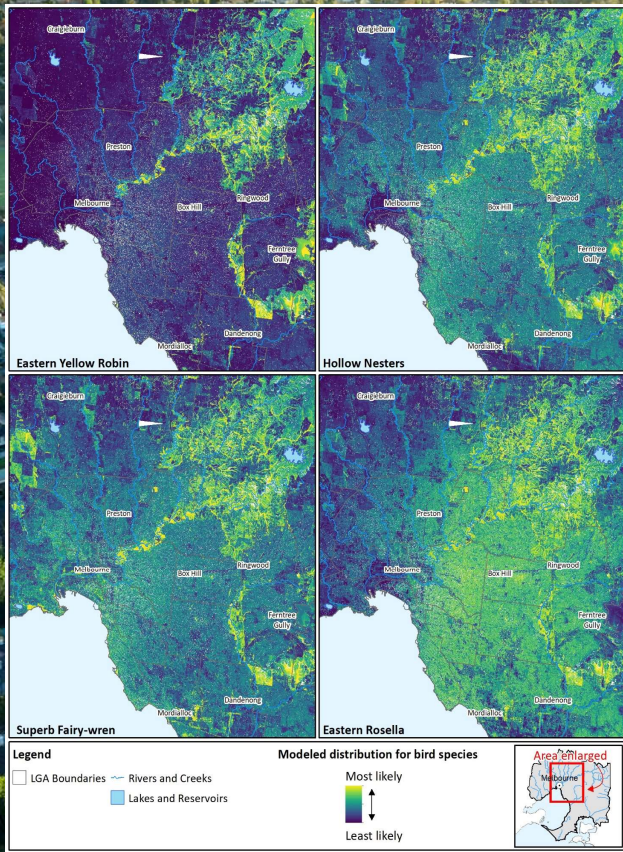
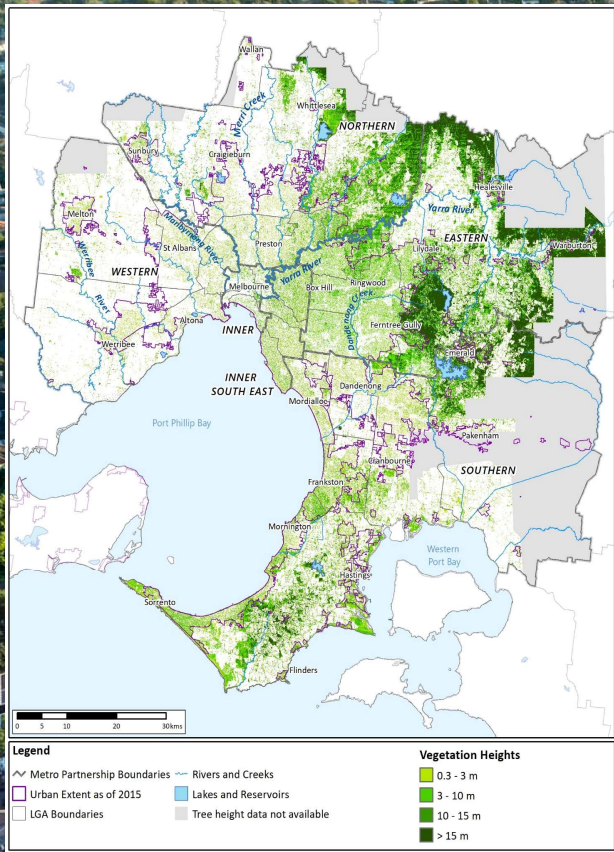




# Literature Review and Technical Analysis









# A Metropolitan Opportunity



City of  
Melbourne

## 32 municipalities

- Banyule City Council
- Bayside City Council
- Boroondara City Council
- Brimbank City Council
- Cardinia Shire Council
- City of Casey
- City of Darebin
- Frankston City
- City of Glen Eira
- Greater Dandenong
- Hobsons Bay City Council
- Hume City Council
- City of Kingston
- Knox City Council
- Manningham City Council
- Maribyrnong City Council
- Maroondah City Council
- City of Melbourne
- City of Melton
- Mitchell Shire Council
- City of Monash
- City of Moonee Valley
- Moreland City Council
- Mornington Peninsula Shire
- Nillumbik Shire Council
- City of Port Phillip
- City of Stonnington
- City of Whitehorse
- City of Whittlesea
- Wyndham City Council
- City of Yarra
- Yarra Ranges Council

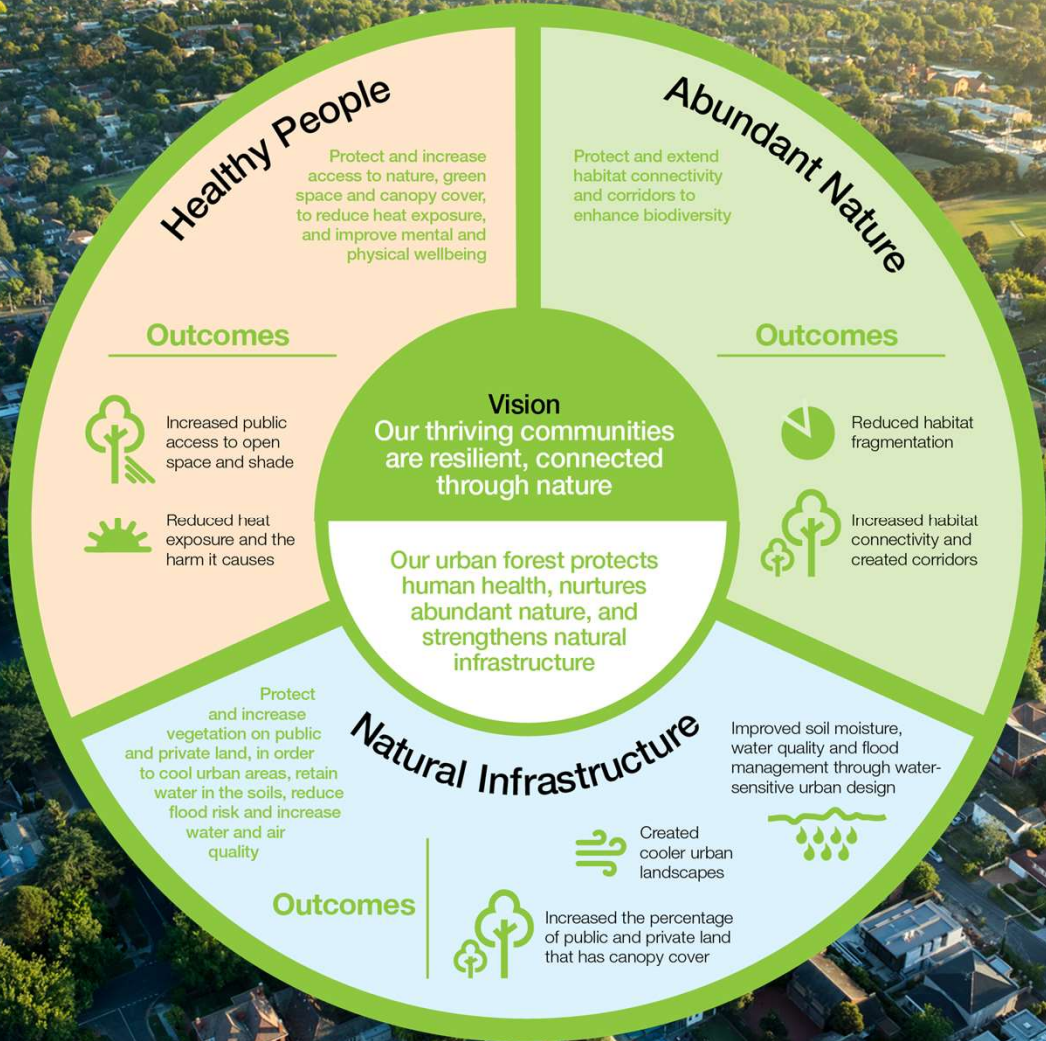


# Consultation and co-design





# Consultation and co-design





# Consultation and co-design

## Action 1



Protect and restore species habitat, and improve connectivity

## Action 2



Set targets and track progress

## Action 3



Scale up greening in the private realm

## Action 4



Collaborate across sectors and regions

## Action 5



Build a toolkit of resources to underpin implementation

## Action 6



Fund the protection and enhancement of the urban forest





Environment,  
Land, Water  
and Planning



Healthy Parks  
Healthy People®



Enhancing Life and Liveability



GLEN EIRA  
CITY COUNCIL



wyndhamcity









An aerial photograph of a suburban neighborhood, densely packed with houses and trees. The houses have various roof colors, including brown, grey, and blue. The trees are lush green, and the overall scene is bathed in the warm, golden light of late afternoon or early morning. The word "Implementation" is overlaid in the center in a large, white, sans-serif font.

# Implementation



# Initiatives, lead organisations and Working Groups

Initiative	Lead organisation	Working Group
Priority Urban Greening Analysis	Living Melbourne (with support from SEW)	Monash; Urban Forest Consulting; Yarra Valley Water; Moonee Valley; Brimbank; Yarra Ranges; Casey; Kingston; Darebin; DELWP
Communications toolkit	DELWP	Melton; Greater Dandenong; Whittlesea; Greener Spaces Better Places; Melbourne Water
Urban Greeners' Resource Hub	Greener Spaces Better Places	Nursery and Garden Industry Victoria; City of Monash; City of Port Phillip; Yarra Valley Water
Let's Scale Up! Engaging and Motivating Community	Earthwatch Australia	City of Wyndham; Brimbank City Council; City of Darebin; City of Stonnington; Yarra City; Hobsons Bay City Council; Greening the West
Value analysis of urban greening on private land	Melbourne Water	Yarra Valley Water; The University of Melbourne; Moonee Valley City Council



# Active Implementation bodies

Greater Western Water  
South East Water  
Yarra Valley Water  
Melbourne Water  
Department of Environment, Land,  
Water and Planning  
Department of Transport  
Nursery and Garden Industry Victoria  
Municipal Association of Victoria  
Greener Spaces Better Places  
The University of Melbourne  
Earthwatch Institute Australia  
Urban Forest Consulting  
Banyule City  
City of Boroondara  
Brimbank City Council  
Cardinia Shire Council  
City of Casey

Darebin City  
Frankston City  
City of Greater Dandenong  
Hume City  
Kingston City  
Knox City  
City of Manningham  
Maroondah City Council  
Melton City Council  
City of Monash  
City of Moonee Valley  
Mornington Peninsula Shire  
Mornington Peninsula Shire  
City of Stonnington  
City of Whittlesea  
Whitehorse City  
Yarra Ranges Shire



# Urban Greeners Resource Hub



**GREENER  
SPACES**  
BETTER PLACES



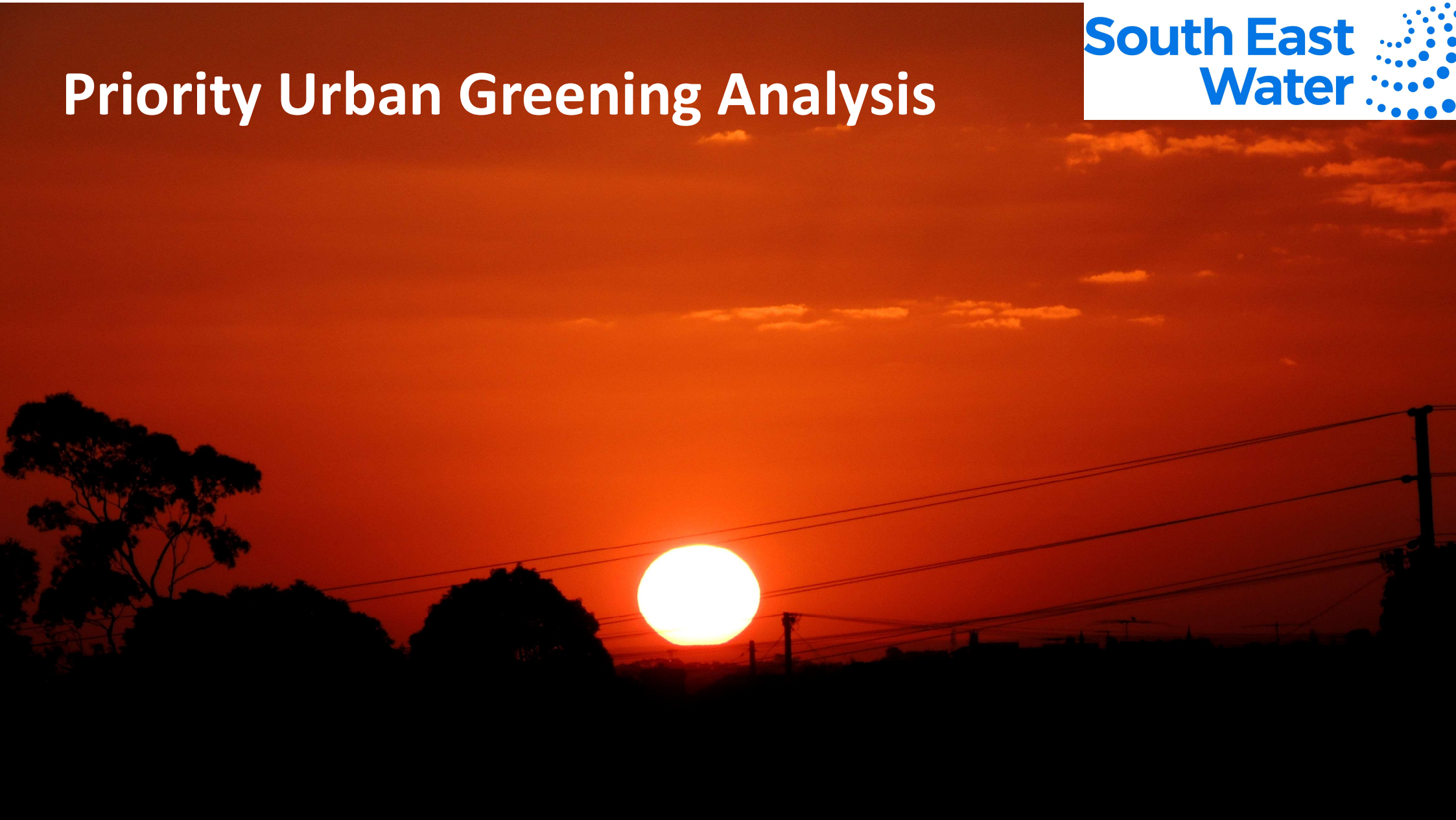
# Lets Scale Up! Urban Greening in the Private Realm. Engaging and Motivating the Community

earthwatch  
AUSTRALIA





# Priority Urban Greening Analysis





# Priority Urban Greening Analysis

Identify and cost priority urban greening opportunities on public and private land across metropolitan Melbourne, primarily to:

- reduce urban heat for vulnerable communities
  - protect biodiversity and provide enhanced habitat
  - enhance priority passive open spaces to cool those places
  - protect the health of waterways, riparian corridors and aquatic ecosystems
  - identify the intersection with integrated water management opportunities
- 
- The purpose of this feasibility study would be to support a business case / prospectus for funding bids at various geographic scales.





We wanted to provide the evidence and narrative that:

1. urban greening for heat mitigation and habitat connectivity could be prioritised
2. the costs of urban greening could be substantial
3. the cost-benefit of urban greening was positive – i.e. good value for money (4:1 positive benefit)

These goals were achieved in this project.

[livingmelbourne.org.au/projects/priority-urban-greening-analysis/](http://livingmelbourne.org.au/projects/priority-urban-greening-analysis/)



# Communications Toolkit





# Lessons Learned

An aerial photograph of a suburban neighborhood. The houses are scattered across a landscape dominated by lush green trees. In the foreground, a road with a white utility truck and a dark car is visible. The background shows more houses and trees under a clear sky.

- Listen to different perspectives
- High level buy-in is critical
- Leadership is for everyone – get involved
- The urban greening space keeps changing
- Not everything goes to plan – move on
- Enhance the positive initiatives already happening
- Address gaps and barriers in the system



Website: [livingmelbourne.org.au](http://livingmelbourne.org.au)

# Living Melbourne

**Our metropolitan  
urban forest**



Hartigan, M.; Fitzsimons, J.; Grenfell, M.; Kent, T. Developing a Metropolitan-Wide Urban Forest Strategy for a Large, Expanding and Densifying Capital City: Lessons from Melbourne, Australia. *Land* 2021, 10, 809. <https://doi.org/10.3390/land10080809>