

10 June 2026

# *Building Resilient Communities: Councils' critical role before, during and after disasters*



PRESENTED BY :  
Ella Wilkinson  
Emergency Management  
Enhancement and Policy Officer

[www.mav.asn.au/](http://www.mav.asn.au/)

# Acknowledgment of Country

The Municipal Association of Victoria respectfully acknowledge the Traditional Owners of this land, the Wurundjeri Woi Wurrung people and Traditional Owners of Country throughout Victoria, and recognise their continuing connection to lands, waters, and community.

We pay our respect to Elders past and present who carry the stories, traditions, cultures, and aspirations of First Peoples, and who forged the path ahead for emerging leaders.

## **This session will cover:**

- Introduction to emergency management in Victoria
- Council roles and responsibilities
- MAV's role
- Council case study incorporating a gendered lens

Disaster Resilience

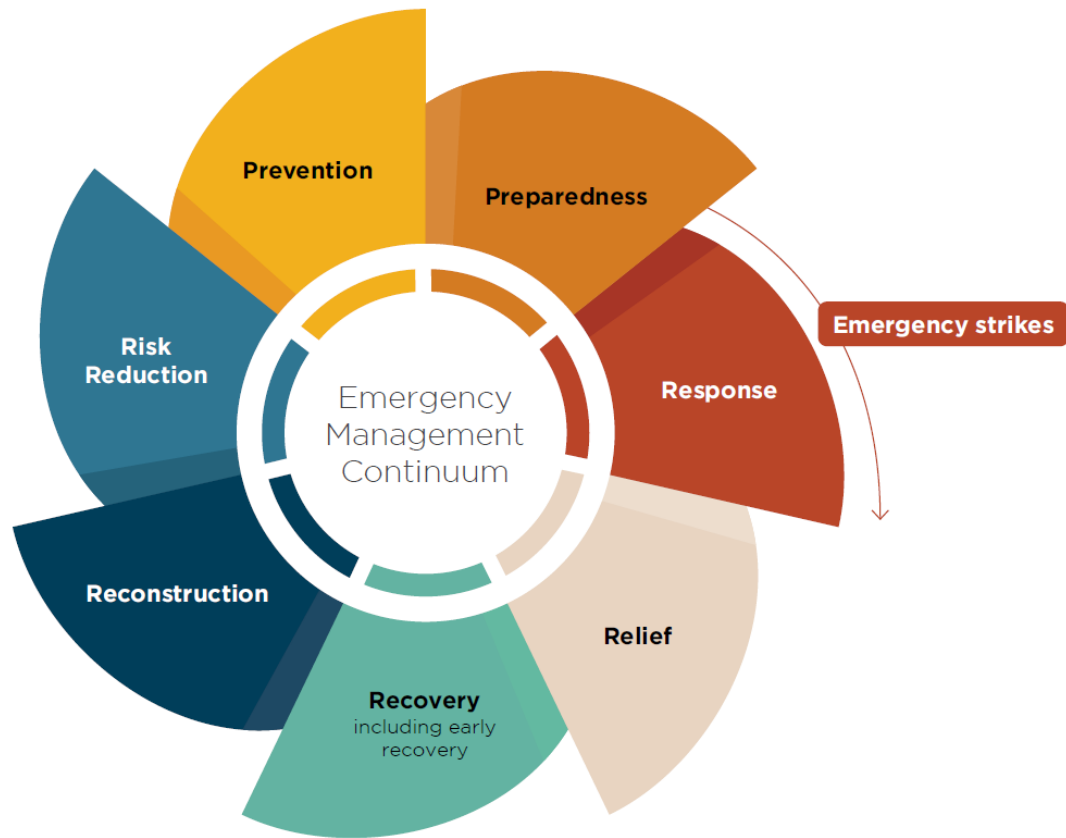
Emergency Management

Emergency

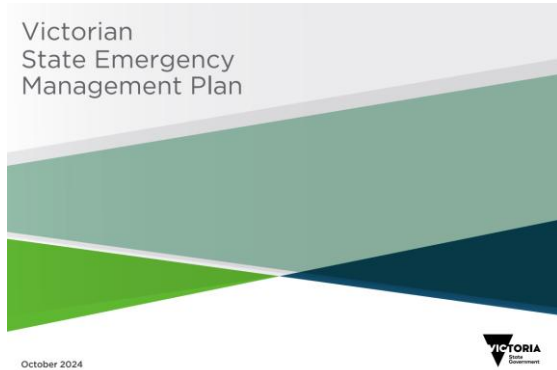
Disaster Resilient and Prepared Communities

Systemic risks

Disaster



# State Emergency Management Plan (SEMP)



- The SEMP is authorised through the Emergency Management Act 2013 (EM Act 2013) **outlines the process of the mitigation of, response to and recovery from** emergencies and specifies the **roles and responsibilities** of agencies.
- There are also specific hazard **sub-plans** i.e. bushfire, extreme heat, flood, storm.
- Each emergency has a '**Control Agency**' that manages the responses i.e. Bushfire = CFA, Storm/Flood = SES.

**What are council roles and responsibilities?**

## Before

- Risk mitigation functions under local government, fire, health, building and planning legislation
- Working with the Municipal and Regional Emergency Management Planning Committees (MEMPC), developing Municipal Emergency Management Plans (MEMP)
- Appointing a Municipal Emergency Management Officer and Municipal Recovery Manager
- Bushfire, earthquake, flood, hazardous materials, heatwave, storm mitigation activities
- Provide information to people and communities on risks, risk mitigation actions, and incident/events that may affect them.

## During

- Establishment of a Municipal Coordination Centre (MECC).
- Establish Emergency Relief Centres to provide immediate and basic services to people affected by an emergency
- Coordinate relief services information and support to communities
- Support full/partial road closures and determination of alternative routes
- Support arranging emergency shelter and accommodation for displaced households

## After

- Municipal tier recovery coordination (activities, information, services)
- Municipal recovery committees and recovery centres
- Assessment, restoration, clean up of roads, bridges, tunnels, public buildings, assets on council owned and managed land
- Support public health advice, temporary accommodation, primary producer recovery programs, waste recovery

# MAV role in emergency management?



Policy and advocacy: representation on State Committees (next slides), MAV EM Forum, MAV Planning Reference Group



Capability and capacity building: Inter Council Emergency Management Resource Sharing Protocol, Incident Management System, Events, State MEMEG

State Crisis and Resilience  
Council (SCRC)

MAV CEO legislated role

State Recovery Coordination  
Committee

State Emergency Management Planning  
Committee

Policy and Strategy Officers Group

Capability & Capacity Steering  
Committee

State Emergency  
Relief Team

State Emergency  
Management Team  
(SEMT) -

Emergency  
Management Joint  
Public Information  
Committee (EMJPIC)

Bushfire Risk Mitigation  
Committee (BRMC)

- Bushfire Planning Reference  
Group
- Monitoring, Evaluation and  
Reporting Plan Working Group

Water Safety  
Coordination  
Committee

Victoria Emergency  
Risk Assessment  
(VERA) Working  
Group

Victorian Mass Gatherings  
Network (VicPol-led  
counter-terrorism planning  
committee) - ad-hoc



MUNICIPAL ASSOCIATION OF VICTORIA

# Councils embedding a gendered lens: Mornington Peninsula

## Community disaster resilience plan

### Vision

A resilient and connected community pro-actively engaged, empowered, and supported to withstand and adapt to disasters.

### Aim

The Community Disaster Resilience Plan aims to:

**Empower individuals and communities to share responsibility for disaster preparedness and recovery and actively contribute to local resilience.**

### Objectives

To achieve this, we will work collaboratively to:

1. **Identify, implement and promote programs and activities that minimise the impacts of disasters and increase resilience in our community.**
2. **Provide clear and inclusive information and training about emergency preparedness, response and recovery.**
3. **Strengthen community disaster preparedness by building capacity through networks, partnerships, and advocacy.**

Each objective has a set of actions that are outlined in the [objectives and actions](#) section of this document.