

Local Government model for primary prevention of family violence and violence against women

MAV Network project update

nous



Agenda



Recap on the project



The whole-of-council approach



The Local Government Guide for Preventing Family Violence and Violence Against Women

Recap on the project

Primary prevention of family violence and violence against women in local government

A model for primary prevention will build on the great work councils and other organisations are already doing.

The model aims to:

Provide a clear picture of all the components that comprise a **whole-of-council primary prevention response**

Support councils at the beginning of their journey to **understand where to start**

Support councils who are advanced in primary prevention to **identify and achieve the 'next step'**

Set a baseline for **consistent monitoring, evaluation and reporting** to build an evidence base for primary prevention in local government

Provide a framework that can guide councils activities over many years, beyond a single program or initiative

We are co-designing the model to ensure it meets the needs of councils



We had massive engagement over three weeks of co-design intensives

Week 1

ESTABLISHING FOUNDATIONS

2 x senior leadership group sessions

2 x co-design sessions

2 x 'open invite' sessions

Week 2

EMBEDDING INTO WHOLE-OF-COUNCIL

1 x senior leadership group sessions

2 x co-design sessions

2 x 'open invite' sessions

Week 3:

MONITORING, EVALUATION AND DISSEMINATION

1 x 2-hour workshop

1 x consultation with Djirra

1 x consultation with Our Watch

The model's architecture

Characteristics of a whole-of-council approach to primary prevention

Shared understanding of purpose and goals
Leadership commitment
Organisational fluency in primary prevention

Councils' domains of influence

Council as a workplace

Council as a service provider

Council as a connector

Councillors as leaders and decision-makers

Focus areas for implementation (examples)



Critical elements required for successful primary prevention

Internal communication and engagement

Community communication and engagement

Enabling Aboriginal self-determination

Applying intersectional practice and inclusion of diverse groups

Inclusion of people with lived experience

Anticipation and response to resistance and backlash

Connection to the response sector and support for victim survivors

Support from specialists

Internal and external partnerships

Monitoring and evaluation

*The Local Government Guide for
Preventing Family Violence and Violence
Against Women*

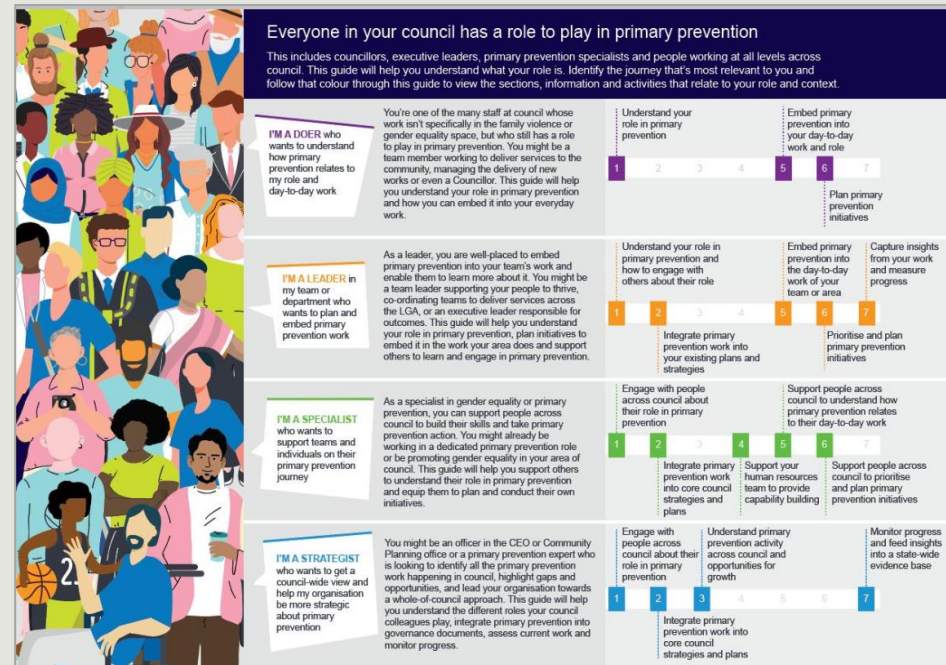
The Local Government Guide for Preventing Family Violence and Violence Against Women

A practical guide for councils to address the underlying drivers of family violence and violence against women including gender inequality

Important aspects of the Guide:

- Barrier to entry is as low as possible so everyone can pick it up
- Includes visually engaging elements
- Practical
- Case studies and examples sprinkled throughout to bring it to life
- Points to relevant/important established work
- Guide must build fluency itself
- Clear relevance to council/area/role

Four audiences: Do-er, leader, specialist, strategist



The Guide reflects the structure of the conceptual model



**Section 0: Map of
whole-of-council
primary prevention**



**Section 1: Council
responsibilities and
engagement approach**



**Section 2: Strategy
integration**



**Section 3: Health
check**



**Section 4: Building
organisational
capability**



**Section 5: Embed this
work into everyone's
roles**



**Section 6: Tailored
action planning**



**Section 7: Monitoring,
evaluation and
dissemination**

Next steps

Nous to finish a first draft of the Guide at the end of this week

In the next 1-2 months:

- Develop evaluation plan for the Guide
- Implementation workshop
- Councillor engagement
- Pre-pilot testing

Next year:

- Piloting with up to 15 councils

