



DEVELOPMENT OF DAREBIN WALKING STRATEGY

Felipe Carvajal & Che Sutherland
Michael Natoli – Tract Consultants
25 November 2015

Introduction

- Why we need a Walking Strategy.
- Our approach
- Steps to develop a Walking Strategy in Darebin.
- Principal Pedestrian Network (PPN) for Darebin (Tract Consultants)
- Australian Urban Research Infrastructure Network (AURIN) and the Walking Strategy (University of Melbourne)
- Next steps

Why we need a Walking Strategy

- ✓ Walking plays a key role in the transport system of our city
- ✓ Need to invest in walking infrastructure and facilities in a strategic way
- ✓ To raise the profile of walking
- ✓ Good for business, health and environment
- ✓ Inexpensive investment compared to other transport infrastructure
- ✓ Inclusive
- ✓ Walkers often get the left overs in space and investment



Our approach

- ✓ Customer focus + Evidence based
- ✓ Strategic
- ✓ Inclusive
- ✓ Land use and transport integration
- ✓ Coordinated across transport modes and units within Council



Developing a Walking Strategy for Darebin



- ✓ Signed the International Charter for Walking in 2008
- ✓ Background and benchmarking
- ✓ Development of a Principal Pedestrian Network
- ✓ Social indicators analysis and AURIN portal
- ✓ Walking assessments and pedestrian Level of Service (LoS)
- ✓ Prioritisation

Principal Pedestrian Network (PPN) for Darebin

PPN is a planning and policy tool for the development and promotion of walking as a transport mode

1. Walking network - Origin and destination, and catchment mapping



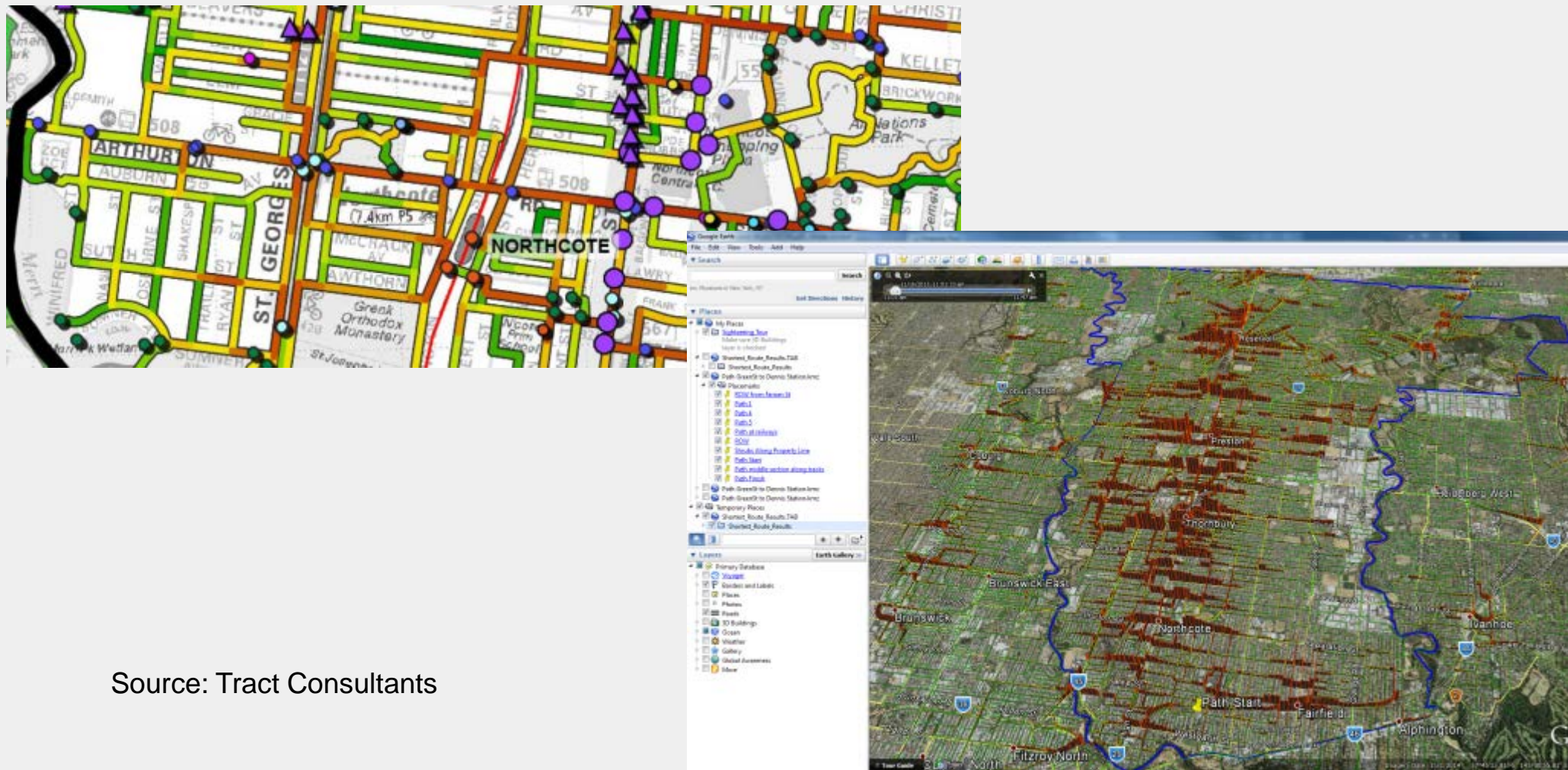
Legend

- Darebin Municipal Boundary
- Train-line
- Existing SmartBus Stops
- Existing Bus Stops
- Existing Tram Stops
- Existing Train Stops
- Existing Community Facilities
- Existing Open Space
- Existing Retail (Major)
- ▲ Existing Retail (Minor)
- Existing Health
- Existing Kindergarten
- Existing Primary School
- Existing Secondary School
- Existing Tertiary School

Source: Tract Consultants

Principal Pedestrian Network (PPN) for Darebin (cont.)

2. Shortest route analysis



Source: Tract Consultants

Principal Pedestrian Network (PPN) for Darebin (cont.)

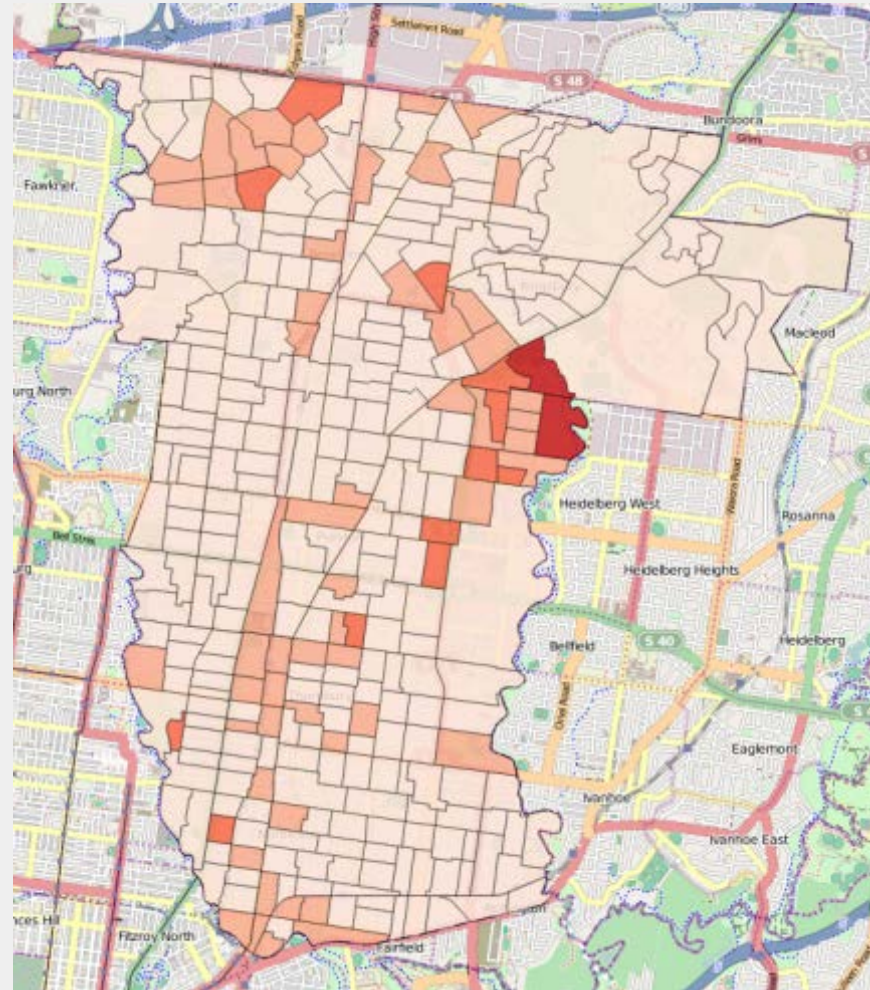
3. Draft PPN and future PPN



Source: Tract Consultants

AURIN and the Walking Strategy

- ✓ Triple-bottom line approach for precincts
- ✓ Statistical level 1 (SA1) analysis of three main attributes:
 - Proportion of residents with no access to motor vehicles
 - SEIFA Score
 - Proportion of residents younger than 14 y.o. and 65+ y.o.

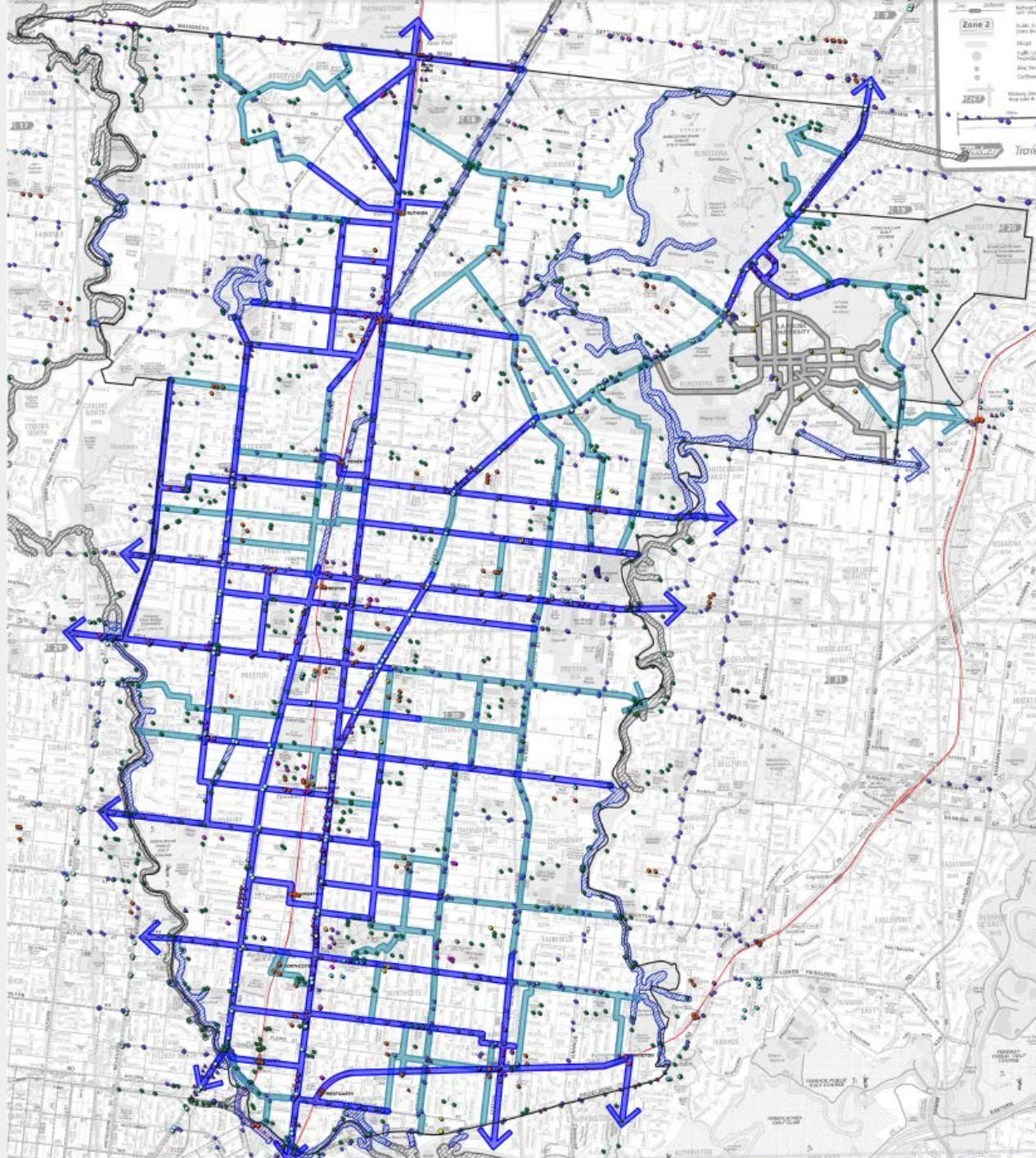


Source: AURIN Portal – UoM

Next steps

- ✓ Determine pedestrian Level of Service criteria
- ✓ Consult with stakeholders and the community on the draft Walking Strategy
- ✓ Undertake assessments of the PPN against the Level of Service
- ✓ Develop a long term action plan for improving the PPN
- ✓ Implement prioritised projects





Thank you

Questions?

felipe.carvajal@darebin.vic.gov.au

che.sutherland@darebin.vic.gov.au

Phone: 8470 88314