



Moyne Wind Farms Overview Rural and Regional Planning Conference

31 May 2019

Current status - Wind Farms in Moyne

5 Operational:

- Total 541MW
- Total 202 turbines

2 Under Construction:

- Total 500MW
- Total 115 turbines

3 Approved:

- Total 396MW
- Total 104 turbines

1 Application Lodged:

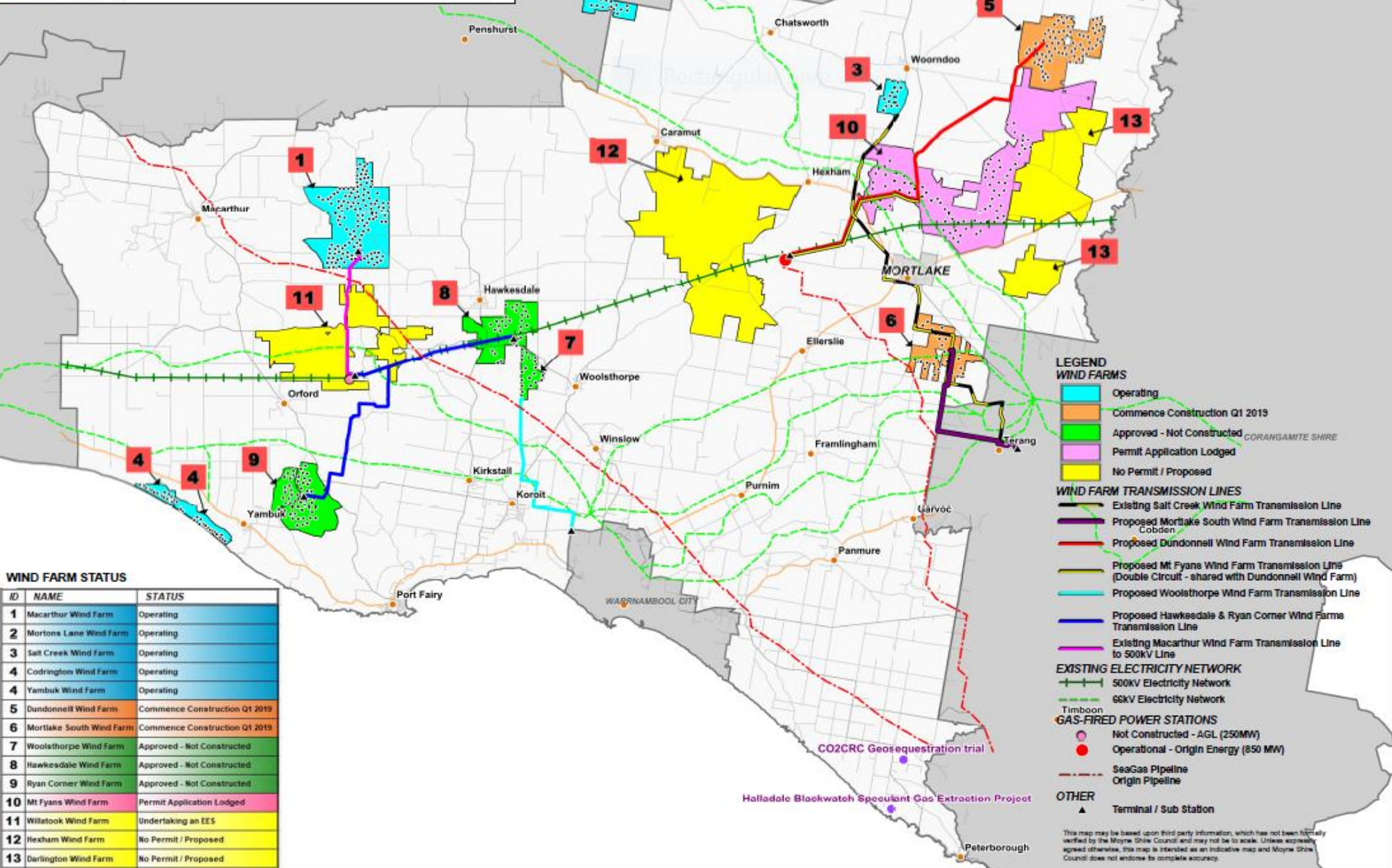
- 250MW
- Up to 87 turbines

3 at Feasibility Stage:

- Estimated 1000MW
- Estimated 240 turbines

Why Moyne?

- Strong wind resource
- Proximity to 500kV electricity network, and capacity in the line



WIND FARM STATUS

ID	NAME	STATUS
1	Macarthur Wind Farm	Operating
2	Mortons Lane Wind Farm	Operating
3	Salt Creek Wind Farm	Operating
4	Codrington Wind Farm	Operating
4	Yambuk Wind Farm	Operating
5	Dundonnell Wind Farm	Commence Construction Q1 2019
6	Mortlake South Wind Farm	Commence Construction Q1 2019
7	Woolsthorpe Wind Farm	Approved - Not Constructed
8	Hawkesdale Wind Farm	Approved - Not Constructed
9	Ryan Corner Wind Farm	Approved - Not Constructed
10	Mt Fyans Wind Farm	Permit Application Lodged
11	Willatook Wind Farm	Undertaking an EES
12	Hexham Wind Farm	No Permit / Proposed
13	Darlington Wind Farm	No Permit / Proposed

- LEGEND**
- WIND FARMS**
- Operating
 - Commence Construction Q1 2019
 - Approved - Not Constructed
 - Permit Application Lodged
 - No Permit / Proposed
- WIND FARM TRANSMISSION LINES**
- Existing Salt Creek Wind Farm Transmission Line
 - Proposed Mortlake South Wind Farm Transmission Line
 - Proposed Dundonnell Wind Farm Transmission Line
 - Proposed Mt Fyans Wind Farm Transmission Lines (Double Circuit - shared with Dundonnell Wind Farm)
 - Proposed Woolsthorpe Wind Farm Transmission Line
 - Proposed Hawkesdale & Ryan Corner Wind Farms Transmission Line
 - Existing Macarthur Wind Farm Transmission Line to 500kV Line
- EXISTING ELECTRICITY NETWORK**
- 500kV Electricity Network
 - 66kV Electricity Network
- GAS-FIRED POWER STATIONS**
- Not Constructed - AGL (250MW)
 - Operational - Origin Energy (850 MW)
- OTHER**
- SeaGas Pipeline
 - Origin Pipeline
 - Terminal / Sub Station

This map may be based upon third party information, which has not been formally verified by the Moyne Shire Council and may not be to scale. Unless expressly agreed otherwise, this map is intended as an indicative map and Moyne Shire Council does not endorse its complete accuracy.



Benefits

Contributing significantly to the transition to renewable energy.

Substantial rates income for Council.

Host landholder income boost over a 25 year period.

Neighbour benefit agreements for some wind farm neighbours.

Community Engagement Committees created by Council to enhance the timely flow of accurate information about projects, and enable regular face-to-face dialogue between community representatives, developers, contractors, Council.

Community funding programs, and VRET community benefit commitments for some wind farms.

Economic impact from the engagement of local and regional businesses, and employment during construction.

Local business engagement and employment in ongoing wind farm maintenance services.



Challenges for Council

Definition and role of the Responsible Authority/Minister for Planning, and rigour of permit and management plan wording.

Number and complexity of matters left to secondary consent.

Roads, Traffic Management Plans and sourcing of quarry materials.

Cumulative impacts.

Construction timelines and seasonal conditions.

Transmission lines.

Environmental expertise.

Lack of noise compliance/monitoring expertise within Council.

Noise, infrasound and Nuisance complaints.



Some key factors influencing the level of community support for wind farms in Moyne

Feasibility to approval can take over 10 years.

Approval to construction can take a further 3 years, longer if extensions are granted.

Complex planning permit and EES processes.

Multiple permit amendments and time extensions.

A vast difference between developers regarding the frequency and methods of communication with the public throughout a project cycle.

Misconceptions about the role of renewables in the energy market.

The cumulative 'social impact' of multiple projects in particular geographical areas of the municipality. ***“How much is too much?”***



Challenges for the Region over the next 12 months

Resourcing within Councils to prepare for the increase in renewable energy projects.

Resourcing within DELWP planning and environment portfolios.

Awareness and monitoring of pressures from multiple projects being constructed at once.

Ongoing continuous learning and sharing of experience between Councils, DELWP, VicRoads and other relevant authorities.

Continuing to advocate for improvements such as the EPA becoming responsible for noise compliance.

Size and scale



Moyne Shire Council

www.moyne.vic.gov.au

PO BOX 51, Princes Street, Port Fairy, VIC, 3284

(03) 5568 0555

Twitter: @moyne_shire

