
Implementation of the Toddler Development Instrument

A COMPONENT OF THE
COMPREHENSIVE MONITORING PROJECT

Introducing the TDI



Today we are introducing the Toddler Development Instrument (TDI), part of the **Comprehensive Monitoring Project** in Victoria.



Addressing a gap

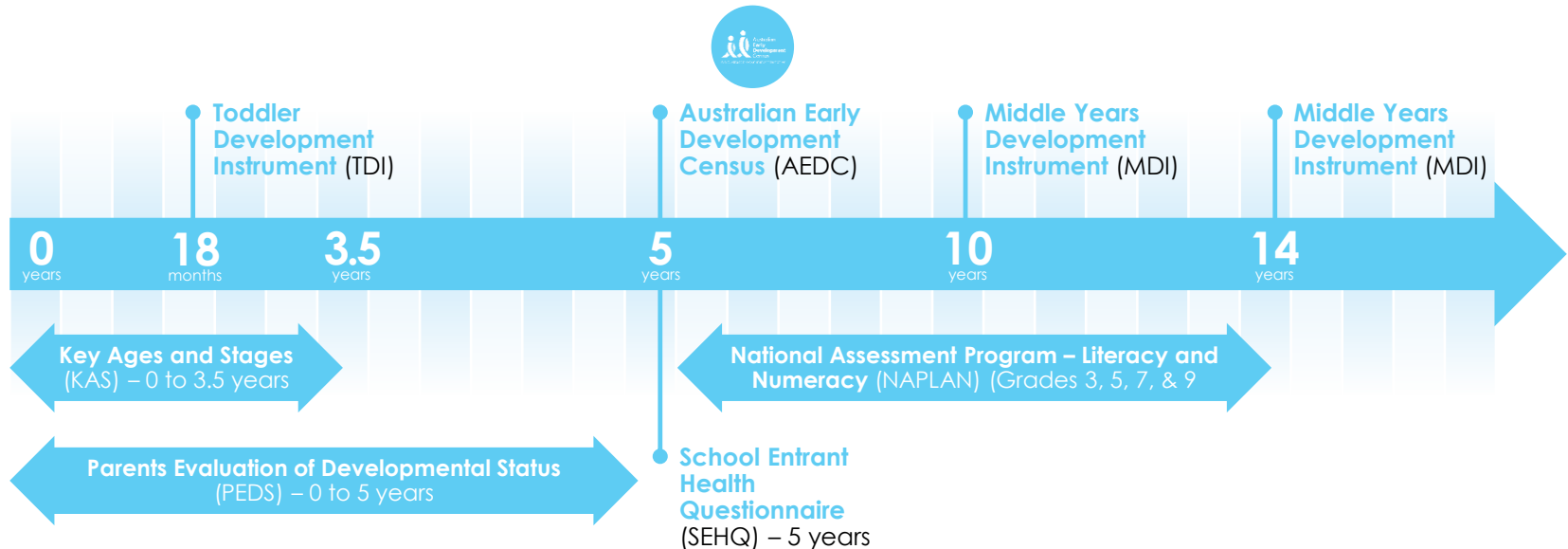


There is currently no measure in Australia that captures the social context in the early years.
The Toddler Development Instrument (TDI) fills this gap.

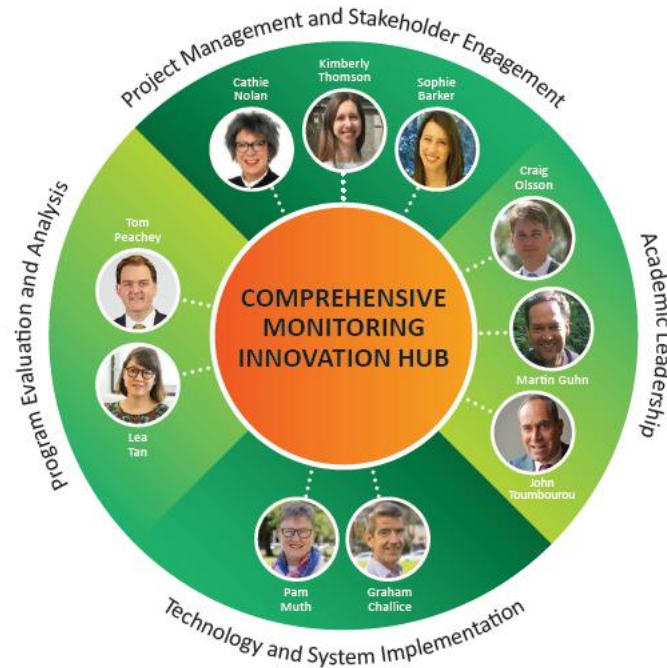


Wider context: Comprehensive Monitoring

In 2018 all participating sites will complete the TDI, AEDC and MDI



Comprehensive Monitoring Team



What is the TDI? Why are we using it?



- A questionnaire for parents of 18 month olds
- Helps us understand needs, early life experiences, and social contexts of toddlers and families
- Can be used to build and strengthen resources and support systems
- 2018 trial is to test feasibility within Victoria
- Received positive feedback in 2015

What are we asking parents to do?



- Parents are asked to complete a survey when they attend an 18 month KAS visit, immunisation, or supported playgroup (links sent via email and SMS)
- Parent participation is voluntary and independent
- The questionnaire takes 10-20mins*
- Responses are private
- Parents and facilitators are invited to provide feedback



What sorts of questions are in the TDI?



Example questions

If I were sick, I could easily find someone to help me with my daily chores

- Strongly agree
- Agree
- Neither agree nor disagree
- Disagree
- Strongly Disagree

I get the emotional help and support I need from my family

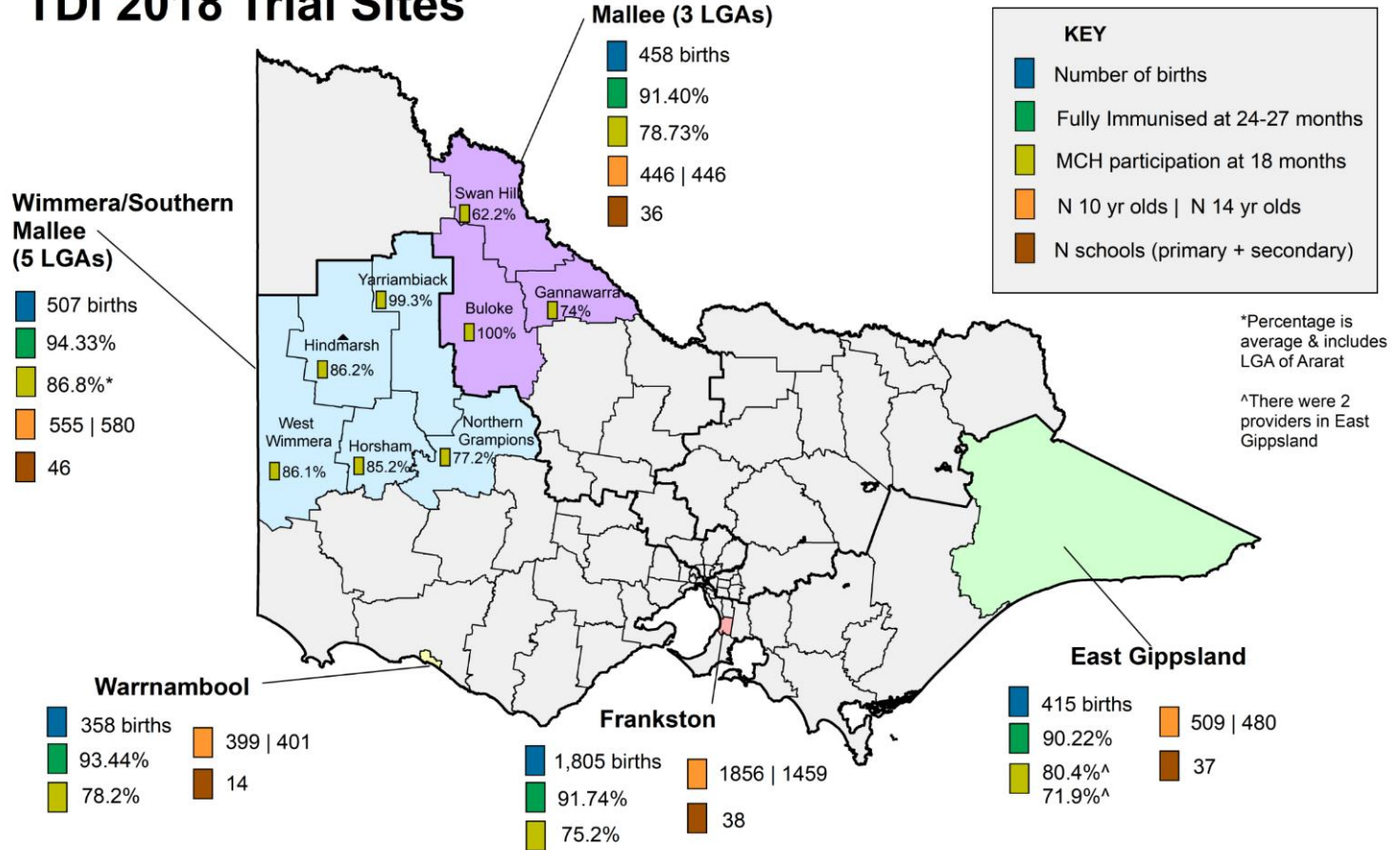
- Strongly agree
- Agree
- Neither agree nor disagree
- Disagree
- Strongly Disagree

If I needed an emergency loan of \$100, there is someone (friend, relative, or acquaintance) I could get it from.

- Strongly agree
- Agree
- Neither agree nor disagree
- Disagree
- Strongly Disagree



TDI 2018 Trial Sites



Immunisation rates: DHHS - Australian Immunisation Register 2017
 MCH Participation rates and Births: DET - Maternal and Child Health Service Annual Report (2014-15)
 10 and 14 y/o population - ABS 2016

Collaborating Partner Sites

Participating communities in 2018:

Swan Hill and Robinvale

Buloke

Gannawarra

Yarriambiak

West Wimmera

Horsham

Northern Grampians

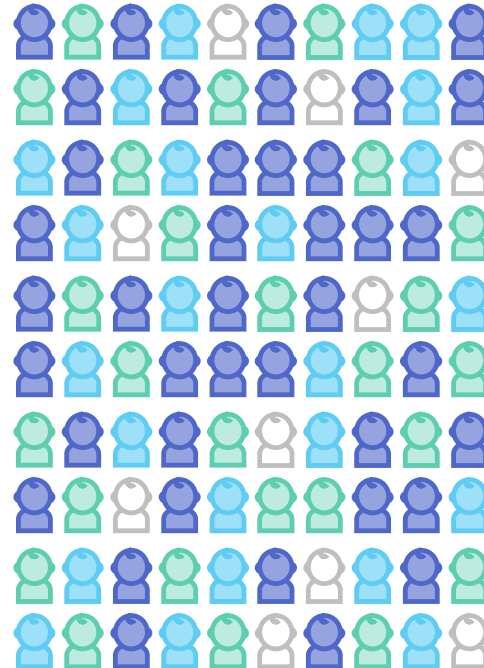
Hindmarsh

Orbost

Gippsland Lakes

Greater Warrnambool

Greater Frankston



Contributing to a common goal



Our goal is to establish a **strong evidence base** to guide policies to improve programs and service delivery for children and families.

By engaging in the TDI, MCH nurses are making an important contribution to our understanding of the **lived experiences of toddlers and their families**, filling a current gap and enabling us to monitor trends in children's development over time.



Ongoing site visits and next steps



- Site visits started in February 2018
- Data collection commenced in June and will complete in December 2018
- Relationships between the project team and MCH have been critical to project learnings and will inform next steps
- Results from the trial will be available in March 2019 and will be workshopped with nurses and site managers





Thank you!

Contact us: Cathie Nolan and Kim Thomson
nolan.catherine.m@edumail.vic.gov.au
thomson.kimberly.k@edumail.vic.gov.au

