

# Implementing GIA actions at City of Moonee Valley

Loretta Bellato

Social Impact Officer

[LBellato@mvcc.vic.gov.au](mailto:LBellato@mvcc.vic.gov.au)

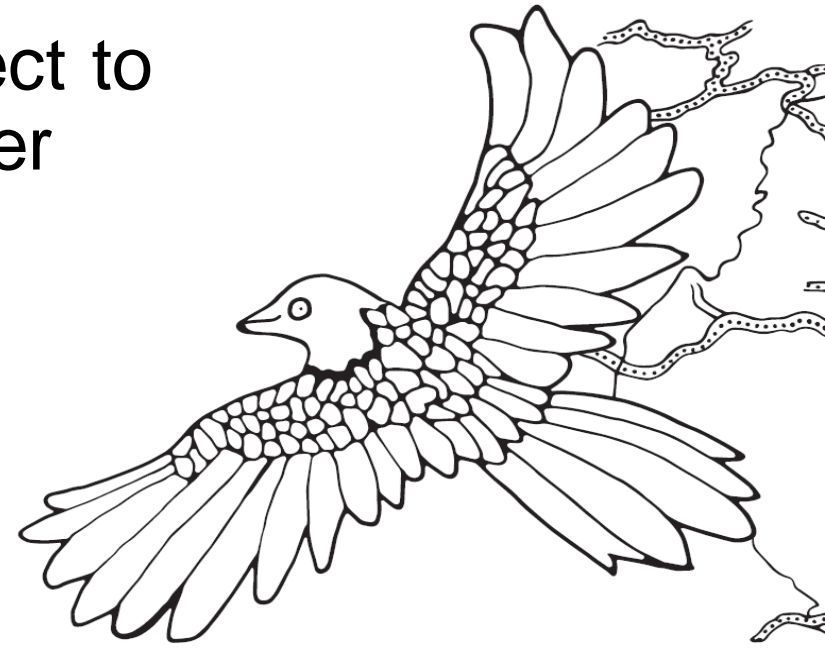
# Acknowledgment

Moonee Valley City Council respectfully acknowledges the traditional custodians of this land - the Wurundjeri Woi-wurrung people of the Kulin Nation, their spirits, ancestors, elders and community members past and present.

Council also extends this respect to Elders and descendants of other Aboriginal peoples here today.

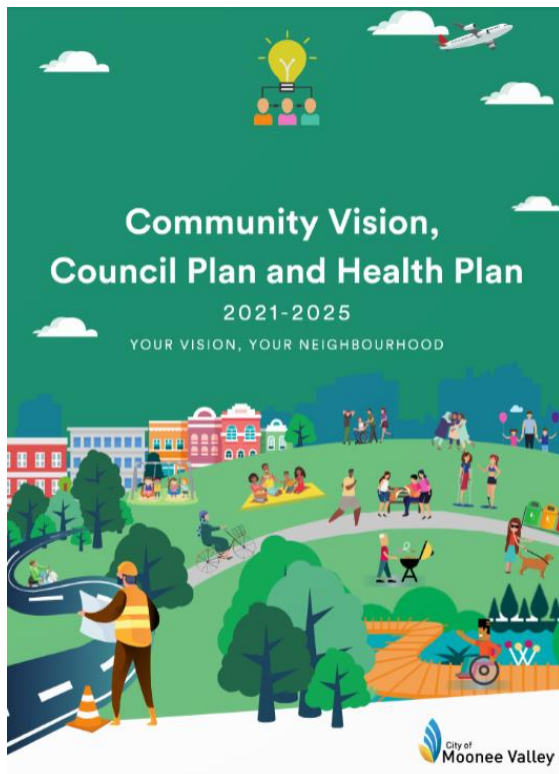
Artwork: Judy Nicholson

*The Myth of the Rainbow*, 2015



# Outline

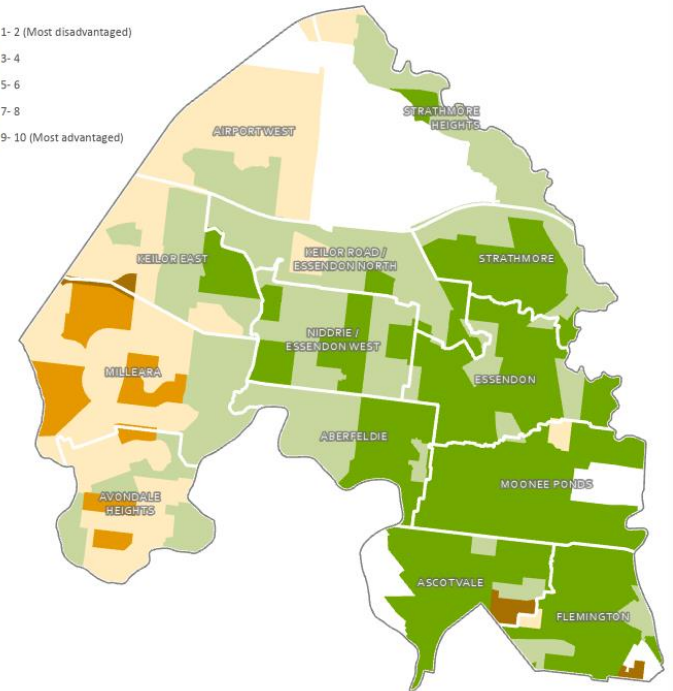
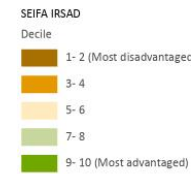
## Gender Impact Assessment Example



## Embedding work at MVCC

- How GIAs are embedded into MV Council processes
- Lessons learned about what has worked so far

# Moonee Valley community



SEIFA IRSAD, 2021

# MV2040 COMMUNITY VISION

In 2040 Moonee Valley is a great place to live, work and visit, strengthened by a network of 20-minute neighbourhoods.

Our neighbourhoods allow all people, at all stages of life, to live locally and sustainably, accessing most of their needs close to their home and addressing climate change.

Our neighbourhoods are beautiful, diverse and hold strong community connections which enable citizens and the environment to be healthy and resilient.

## MV2040 Strategic Directions / Council Plan Strategic Objectives:

17. A city that fosters local identity.
18. A city of high-quality design.
19. A city with vibrant and safe public spaces.
20. A city in a beautiful landscape setting.



## MV2040 Strategic Directions / Council Plan Strategic Objectives:

13. A city that is low carbon.
14. A city that is green and water-sensitive.
15. A city that rethinks waste.
16. A city that is cool and climate-adapted.

## MV2040 Strategic Directions / Council Plan Strategic Objectives:

1. A city that celebrates diversity.
2. A city with a dynamic network of accessible community facilities and services.
3. A city where people are healthy and safe.
4. A city where residents can engage, participate and influence change.
5. A city with housing for all.



### FAIR QEENTE BOORDUP

A fair city that values diversity, where everyone feels safe, is included, is healthy and has access to services and housing.



### BEAUTIFUL NGA-ANGO GUNGA

A beautiful city that celebrates its identity, heritage and open spaces.



### THRIVING BANDINGTH

A thriving city with access to jobs, lifelong learning, vibrant and dynamic activity centres.



### GREEN WUNWARREN

A green city that is ecologically healthy and environmentally responsible.



### CONNECTED YANONINON MAGGOLEE

A connected city of accessible, active and sustainable transport choices.



## MV2040 Strategic Directions / Council Plan Strategic Objectives:

6. A city with opportunities to learn and work.
7. A city that responds to a changing economic landscape.
8. A city with things to see and do.
9. A city that is technology ready.

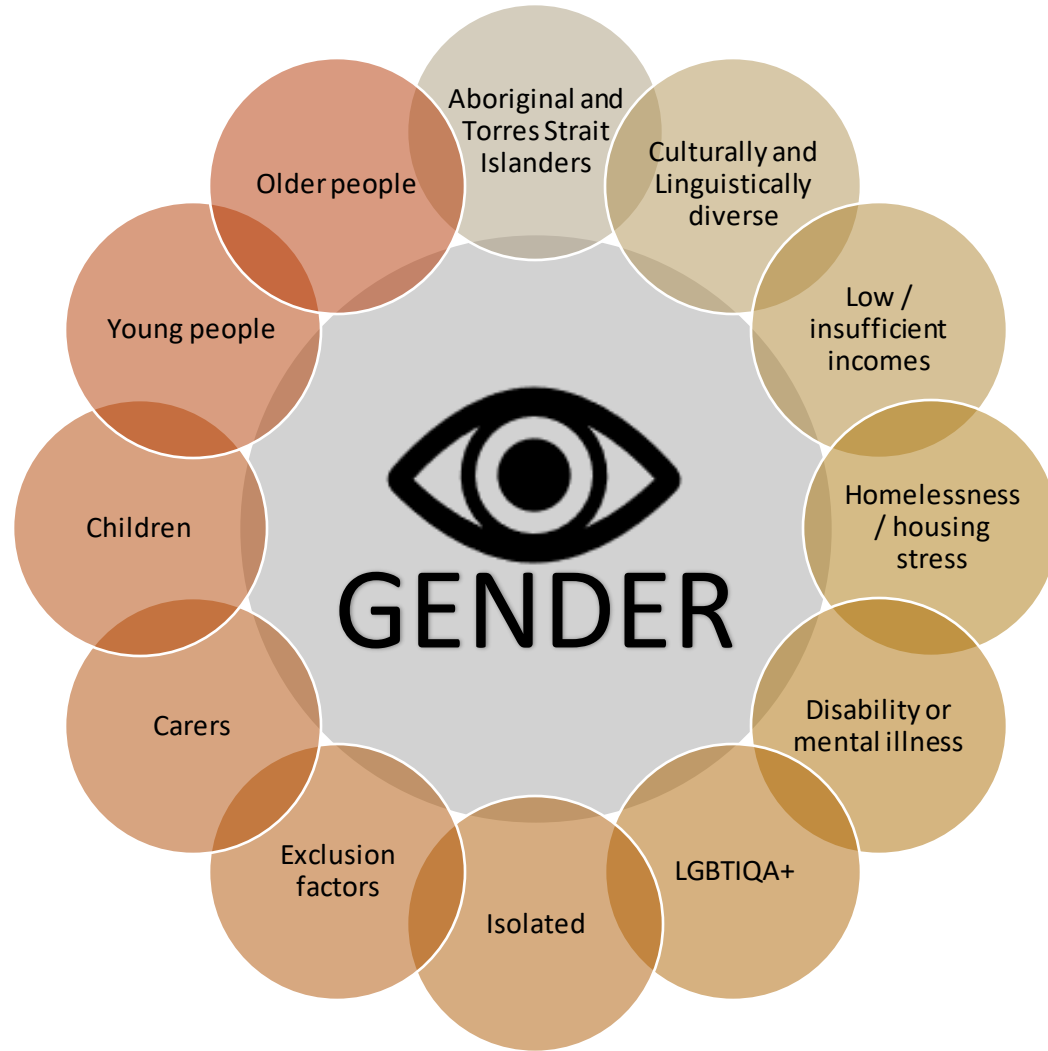


## MV2040 Strategic Directions / Council Plan Strategic Objectives:

10. A city where sustainable transport is the easy option.
11. A city with streets and spaces for people.
12. A city at the forefront of transport technology.

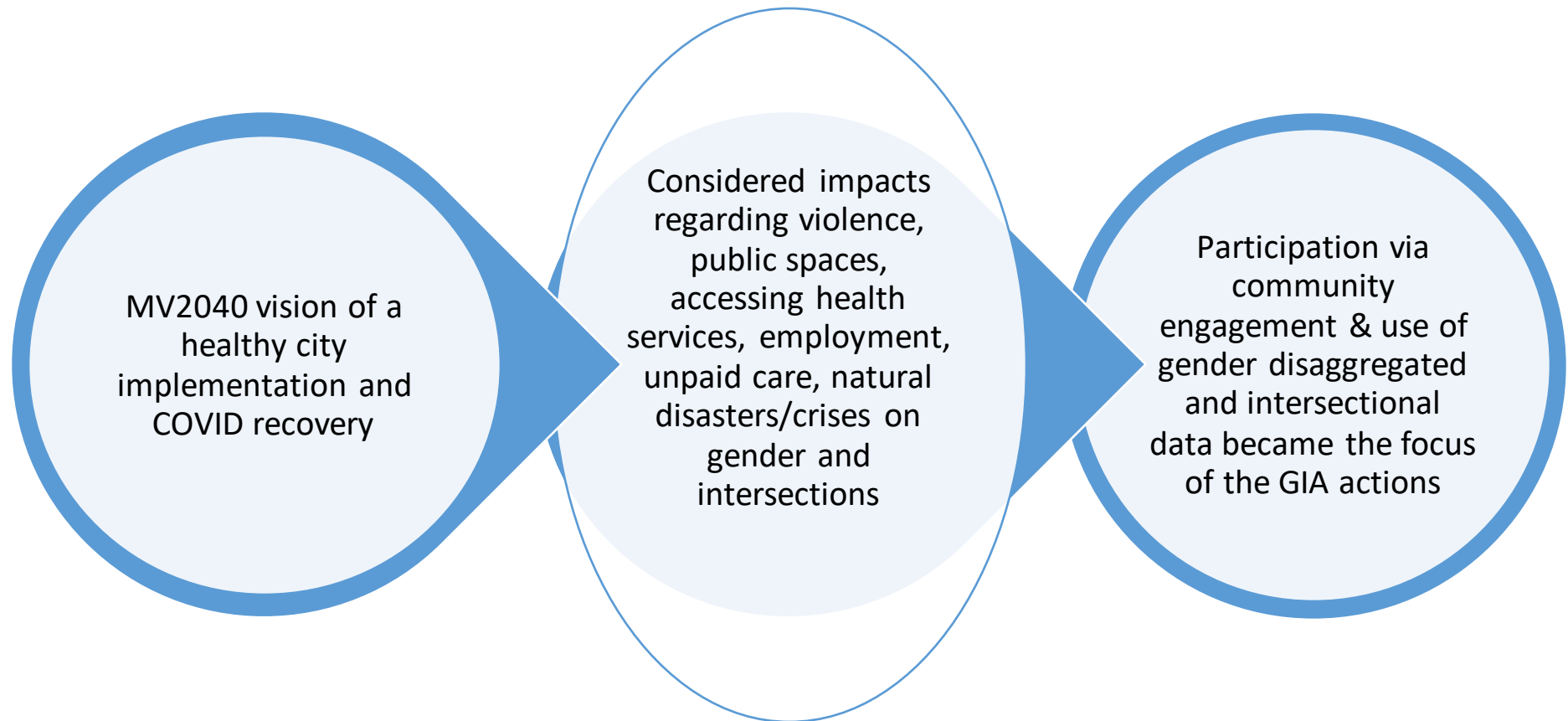
MOONEE VALLEY  
**MV2040**  
OUR VISION FOR  
A HEALTHY CITY

# Intersections with MV2040 Target Populations



# Policy GIA: Council Plan & Health Plan 2021 - 2025

*GIA Purpose: to inform the overall direction, vision, principles and key elements of the plan*



# Participation barriers identified (that were relevant to the actions)

## Gender

- Council officers tend to focus on the gender binary
- Gender disaggregated data that is collected does not consider genders other than male and female
- Accessible consultation opportunities to enable women, men and gender diverse people to participate are varyingly limited due to their assigned gender roles and responsibilities
- Gender diverse people and women may not feel safe or comfortable during engagement sessions
- Experiences of violence reduce participation in community activities for many women
- Men are more likely to experience poorer health service access and be less engaged in health planning consultations

## Intersectionality

- Language barriers for some groups
- Cultural norms affect perceptions of safety, inclusion and feeling welcome
- Lack of trust
- Access, transport and other communication barriers



# Actions taken to develop/vary the policy

Positive  
impact

Efforts are taken to engage a broad range of community members and undertake specific engagement with cohorts and organisations that represent MV2040 Target Populations.

Ensures that an intersectional approach is taken to involve the community in designing and meeting the needs of people experiencing significant levels of disadvantage

# Actions taken to develop/vary the policy

Neutral  
impact

Identify and collate relevant gender disaggregated data to inform the development of Council and Health Plan initiatives

Gender disaggregated data is an essential component that will assist with developing initiatives that address gender inequality, however overall gender impact will only come from the initiatives that will be developed

# Participation goals outlined in the Plan

**Strategic Direction 4:** A city where residents can engage, participate and influence change.

- Increased democratic participation.
- Increased participation in community engagement activities.

## **Commitment to health and wellbeing**

Council is also committed to promoting diversity, social inclusion, integration and collaboration in local communities and neighbourhoods, firmly grounded in social justice principles including human rights, access, equity and participation.

## **Target populations**

Central to MV2040 and this plan is the recognition that some community members experience disproportionate levels of disadvantage. Equity is about reducing the differences in health and wellbeing experienced by different groups and communities, so everyone has the same opportunity to feel included and able to participate in community life.

# 2023/2024 Initiatives: positive gender equality impact examples

## Program level and service level GIAs

### 2023/24 COUNCIL PLAN INITIATIVES

### BEAUTIFUL NGA-ANGO GUNGA

*A beautiful city that celebrates its identity, heritage and open spaces.*

### Your vision. Your neighbourhood. Our commitment to Moonee Valley.

#### FAIR QEENTE BOORDUP

*A fair city that values diversity, where everyone feels safe, is included, is healthy and has access to services and housing.*

- F1.1** Deliver the relevant actions within the Bagarru Bagarru Djerring Reconciliation Plan.
- F2.1** Deliver an alcohol harm prevention action plan to reduce the known impacts of alcohol overconsumption on the community, in partnership with relevant stakeholders.
- F2.2** Open and operate the Djerring Flemington Hub with services and programs that are safe, accessible and welcoming for the community.
- F3.1** Develop and seek endorsement for a public Statement of Commitment to the prevention of family violence.
- F4.1** Review disability access of Council-owned property as part of condition assessments and audit reporting, in accordance with a Council resolution.
- F5.1** Progress the Family and Children's Service's Facilities Plan, to complement the Family and Children's Framework and the initial tranches of the Building Blocks Partnership with the Victorian School Building Authority.
- F6.1** Progress planning for the development of a new Niddrie Library and Community Hub.
- F6.2** Commence a review of the MV2040 Action Plan: Community Facilities to recognise and respond to changing community need, demand and economic factors.
- F7.1** Develop an MV2040 reporting framework as part of Council's integrated strategic planning framework.
- F8.1** Work with young people to create opportunities for professional development, job readiness and skill-building in skill shortage industries including the creative industries sector.

#### THRIVING BANDINGITH

*A thriving city with access to jobs, lifelong learning, vibrant and dynamic activity centres.*

- T1.1** Complete Keilor Road, Niddrie streetscape works by upgrading the north side.
- T1.2** Prepare an events planning framework in line with the Arts & Culture Strategy, that considers support for the night-time economy, local business, and increased visitation to local areas.
- T2.1** Construct pavilions including all gender changerooms, and progress other key sporting facility improvements across the municipality, in accordance with the 2023/24 Budget.
- T2.2** Upgrade sports fields at Strathnaver Reserve and Lebanon Reserve.
- T3.1** Commence construction of the Ascot Vale Library upgrade.
- T4.1** Develop guidelines for commissioning public art including street art, to continue to make art accessible to the community.

#### GREEN WUNWARREN

*A green city that is ecologically healthy and environmentally responsible.*

- G1.1** Fund key projects through the Community Climate Emissions Reduction Reserve, following Community Carbon Emissions Reduction Taskforce recommendations.
- G2.1** Continue tree planting and maintenance towards 30% canopy cover by 2040 with support from the Cooler Greener West grant program.
- G3.1** Expand the Food Organics Garden Organics (Green Bin) program to become a universal service aimed at significantly increasing the diversion of organics from landfill.

#### CONNECTED YANONINON MAGGOLEE

*A connected city of accessible, active and sustainable transport options.*

- C1.1** Implement local area traffic management initiatives across the municipality, including in Airport West and Travancore.
- C2.1** Investigate the feasibility, and consider the merit of an eScooters program across Moonee Valley, to provide another option for non-vehicle transport that can support residents to move around including accessing public transport.
- C3.1** Advocate for road safety improvements at key locations, including the Essendon North Junction and other identified dangerous crossing points, particularly on Mt Alexander Rd.
- C3.2** Progress implementation of the Moonee Ponds Activity Centre to 2040 Local Plan to address on-street, off-street and high-rise parking, accessibility, connections and active transport in the precinct, through the preparation of a parking feasibility study in Shuter Street, Moonee Ponds.

**Budget initiatives are identified in bold, and are contingent on funding being confirmed in the 2023/24 Budget.**

**Council Plan initiatives will be developed and presented to the community annually.**

# Sports pavilions

2023/24 Initiative

**Strategy T2.** Support all members of the community to take part in sport and recreation, by developing and delivering sustainable facilities

Our commitment to Moonee Valley.

**THRIVING BANDINGITH**

A thriving city with access to jobs, lifelong learning, vibrant and dynamic activity centres.

**T1.1** Complete Keilor Road, Niddrie streetscape works by upgrading the north side.


**T1.2** Prepare an events planning framework in line with the Arts & Culture Strategy, that considers support for the night-time economy, local business, and increased visitation to local areas.

**T2.1** Construct pavilions including all gender changerooms, and progress other key sporting facility improvements across the municipality, in accordance with the 2023/24 Budget.

Upgrade sports fields at Strathnaver Reserve and Lebanon Reserve.

Commence construction of the Ascot Vale Library upgrade.

Develop guidelines for commissioning public art including street art, continue to make art accessible to the community.



# Prevent family violence

**Strategy F3.** Prevent violence against women and families and support those experiencing it to access appropriate help, by working with partner organisations.

## 2023/24 Initiative

**FAIR**  
**QEENTE BOORDUP**

*A fair city that values diversity, where everyone feels safe, is included, is healthy and has access to services and housing.*

- F1.1** Deliver the relevant actions within the Bagarru Bagarru Djerring Reconciliation Plan.
- F2.1** Deliver an alcohol harm prevention action plan to reduce the known impacts of alcohol overconsumption on the community, in partnership with relevant stakeholders.
- F2.2** Open and operate the Djerring Flemington Hub with services and programs that are safe, accessible and welcoming for the community.
- F3.1** Develop and seek endorsement for a public Statement of Commitment to the prevention of family violence.

**B1.1** Continue imple... and landscaping  
**B1.2** Prepare an... developme...  
**B2.1** Progres... guide n... local ne...  
**B2.2** V...

# Carbon program

**Strategy G1.** Help reduce our city's greenhouse gas emissions

2023/24 Initiative

...pment, job readiness and skill-building  
... shortage industries including the  
... ve industries sector.

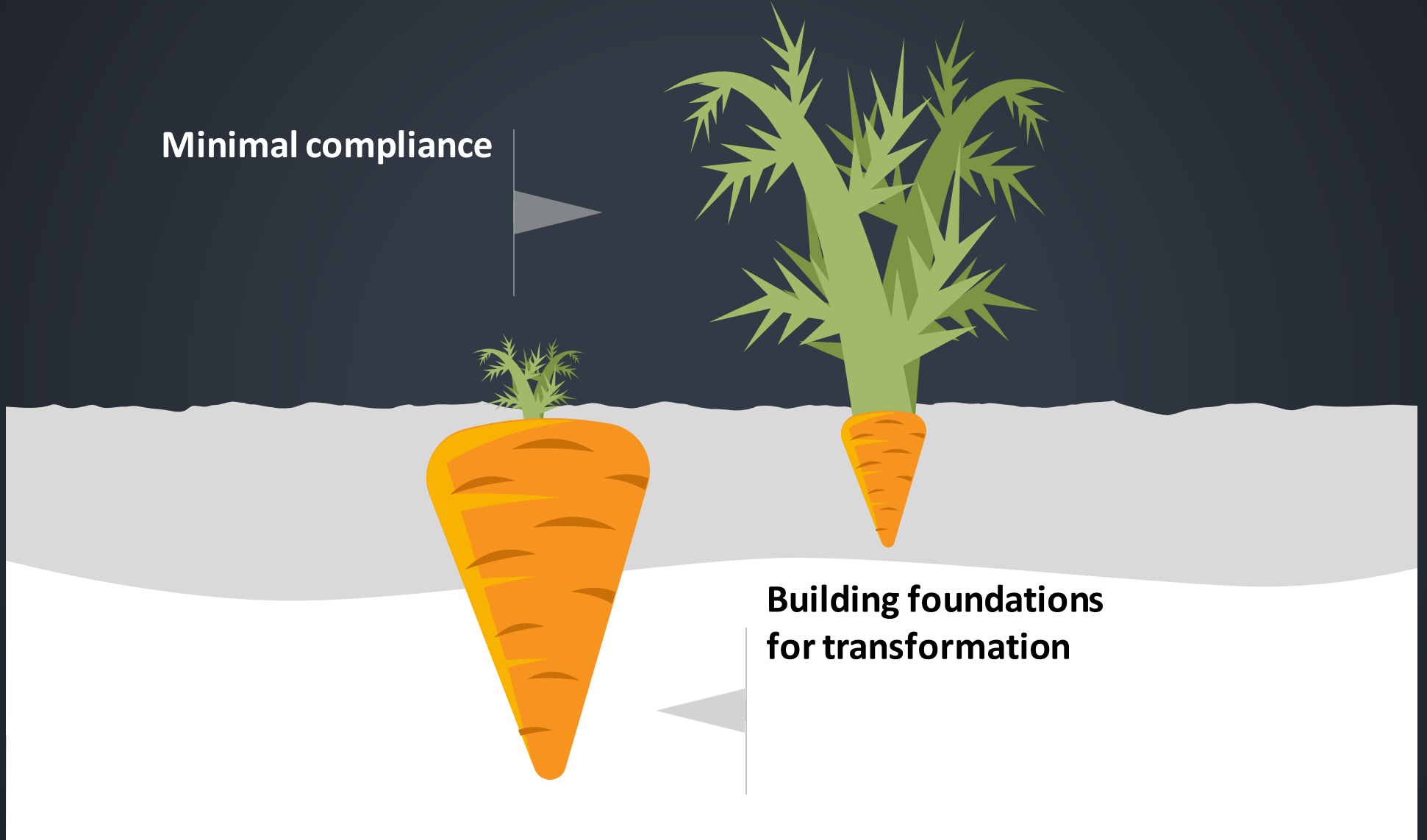


**GREEN  
WUNWARREN**

*A green city that is ecologically healthy and environmentally responsible.*

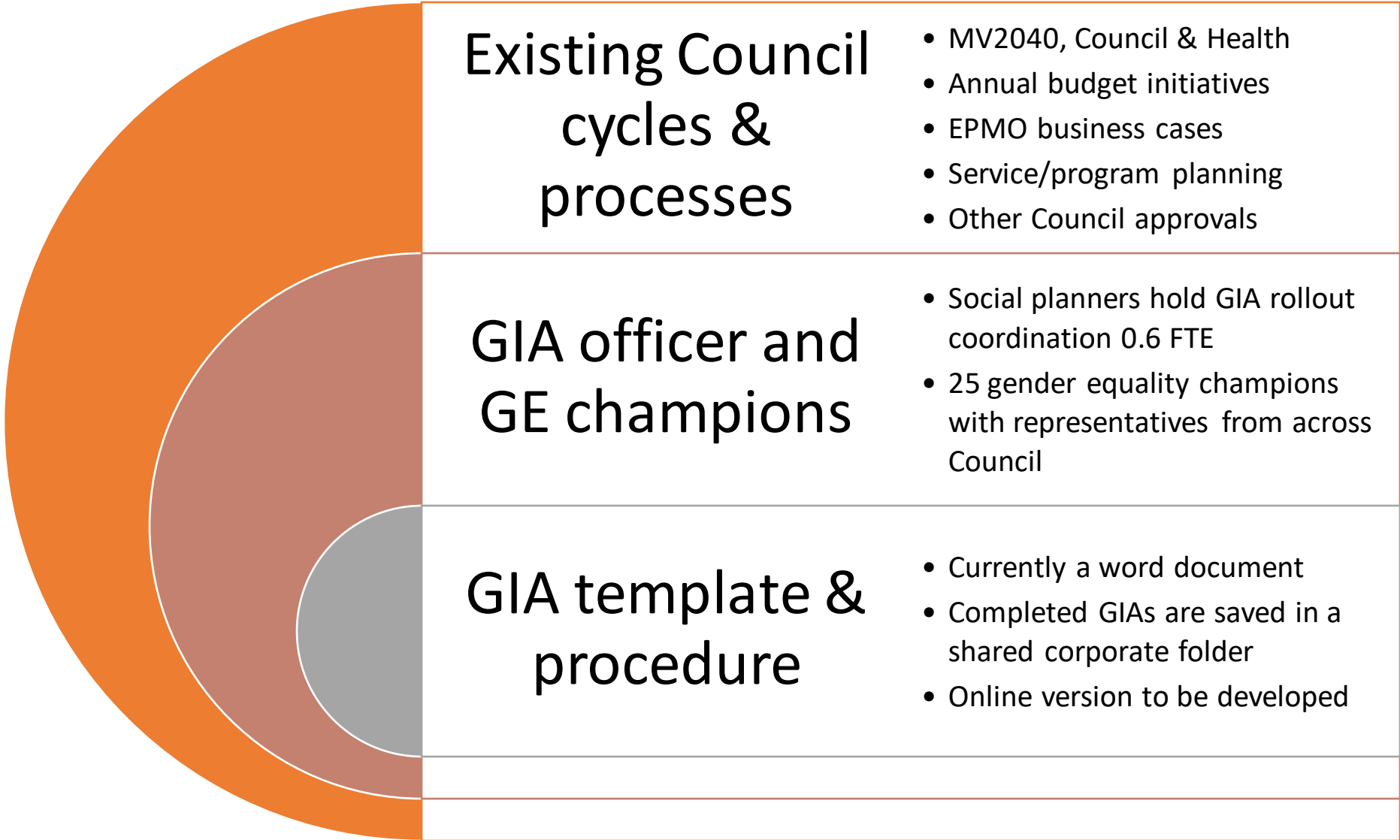
**G1.1** Fund key projects through the Community Climate Emissions Reduction Reserve, following Community Carbon Emissions Reduction Taskforce recommendations.

# Embedding work

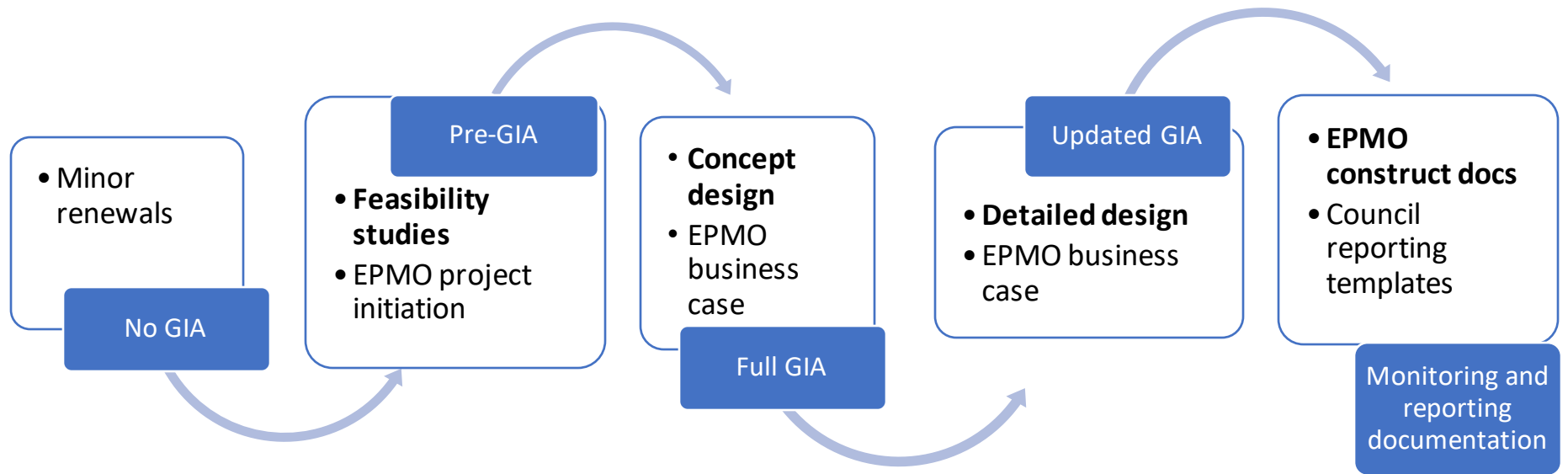




# How GIAs are embedded into MV Council processes



# EPMO Example – Pavilion build



# Key lessons so far

- Start GIAs early in the planning process
- Align GIA actions with broader Council strategies and initiatives
- Some actions do not get recommended due to budget or other resource constraints and competing demands
- Monitor throughout the lifecycle of an initiative to ensure that GIA actions are not designed out
- Keep focused on the quality of GIAs
- Get GIAs online for ease of use

Thank you