

Supporting communities through high emotion after an emergency

Fiona Li, Senior Policy Officer
Emergency Management
Department of Health and Human Services

What is high emotion?

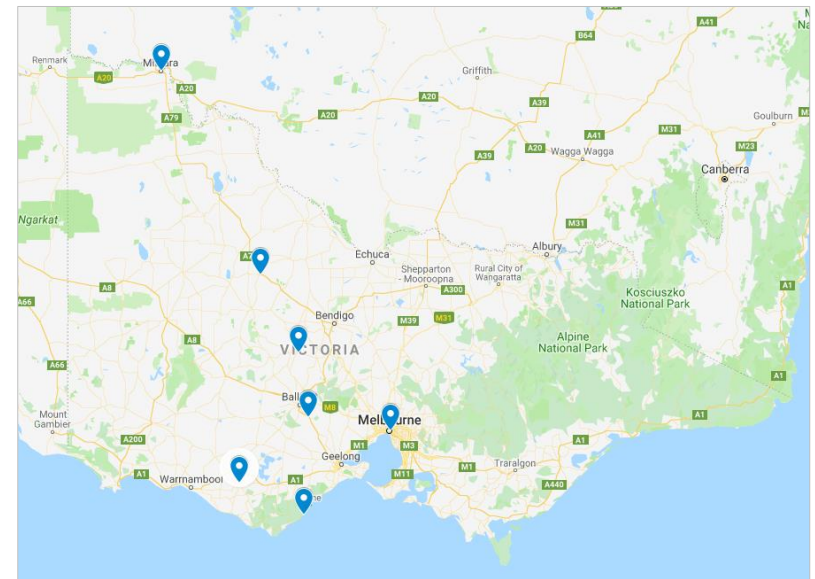
Emotional reactions are a normal response to the distress and trauma associated with an emergency.

At times, this emotional response is transformed into 'high emotion' – an emotion of such intensity that it disrupts a person or community's ability to undertake recovery activities.

Supporting communities through high emotion after an emergency

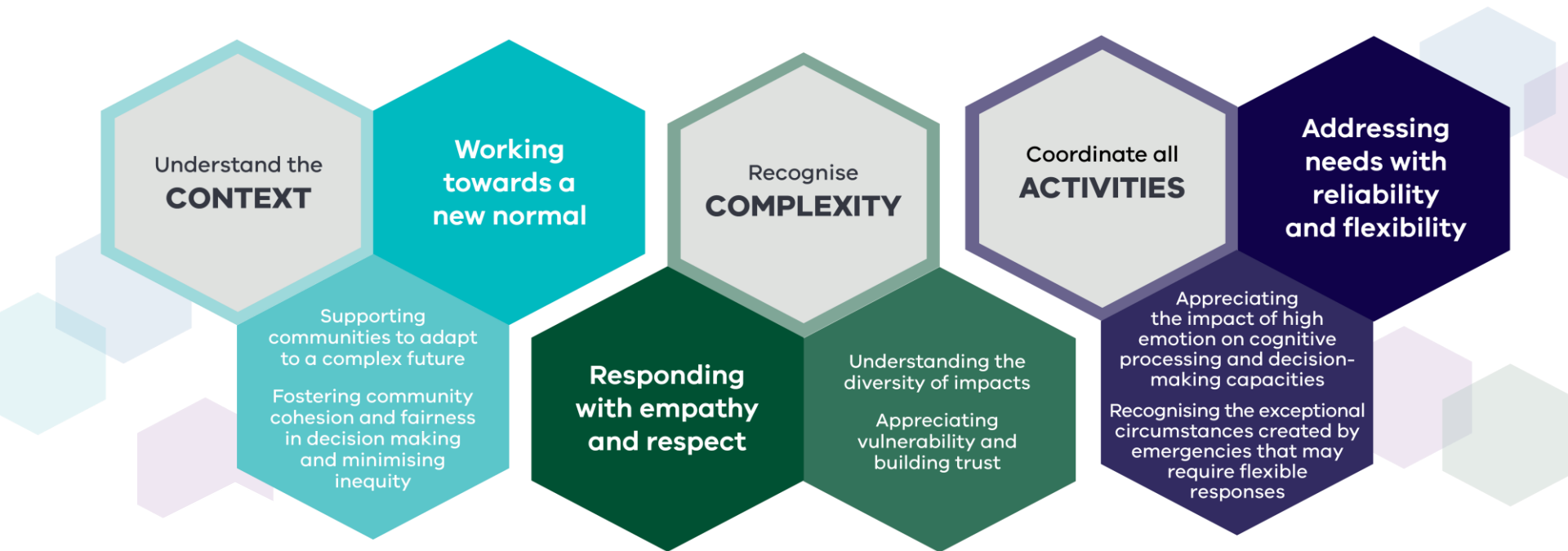
This project seeks to improve community and individual post disaster recovery by supporting the emergency management sector to plan and respond to ‘high emotion’.

- Literature review
- Consultations with seven emergency affected communities
- Consultations with policymakers across the EM sector



Six approaches to support communities through high emotion after an emergency

These approaches were developed by taking a 'high emotion' lens to the National Principles for Disaster Recovery.



Six approaches to support communities through high emotion after an emergency



Psychosocial Reference Group

Provides expertise to inform psychosocial support policy, research and program development before, during and after emergencies.

Representatives of the group include:

- VCOSS
- Local government
- Clinical psychologists
- Social Recovery Reference Group
- Australian Red Cross
- Victorian Council of Churches
Emergencies Ministry
- Academics
- Department of Health and Human Services program areas:
 - Emergency Management
 - Mental Health
 - Population Health
- Emergency Management Victoria
- Department of Education and Training

Psychosocial expertise to support the Emergency Management sector

Provides sector-wide psychosocial expertise to promote person-centred relief and recovery approaches.

Recent examples include:

- recovery planning following for the 2017 Bourke Street incident
- supporting whole-of-government activities for the 10 year anniversary of the 2009 Victorian Bushfires.
- providing guidance to Creative Victoria in the early development of the Victorian Bushfire museum.

Questions?